

# YORKE PENINSULA





## Marni Guurandanu

Marni Guurandanu gardinya,  
 Marn-marna buggilu Nharangga banggara.  
 Ngadlu midji 'Gayinbara Dhura',  
 Wambana manggudja  
 Ngadlu dhadni muga-mugali.  
 Banggara badja,  
 Burdlingga bidhigina wildja,  
 Yarda marna,  
 Dhadni marni-marni,  
 Dhindu, bira wanna  
 Garrinali, miyanali  
 Ngallugu wawi, wildu, garrdi,  
 widhadha wandidja.  
 Guuranda, ngallugu banggara,  
 ngallugu wardli. Ngadlu nha marni,  
 Nha guranna wandidja!

## Welcome to Yorke Peninsula

Welcome to the beautiful Yorke Peninsula,  
 The ancient country of Nharangga.  
 We are known as the 'Butterfish People',  
 Due to the knowledge we hold  
 Of the seas that surround us.  
 Magnificent country,  
 Bright stars at night,  
 Land of abundance,  
 Bountiful seas,  
 Where the sun and the moon  
 Awake and sleep.  
 Home to our totems, the female red  
 kangaroo, the wedge-tail eagle, the  
 emu, and the great white shark.  
 Yorke Peninsula, our country, our home.  
 We welcome you, enjoy your stay!



## COPPER COAST Visitor Information Centres – Kadina and Moonta

**Kadina** 50 Mines Road, Kadina SA | ☎ (08)8821 2333  
 OPEN Monday-Friday 9am to 5pm | Saturday, Sunday and Public Holidays 10am-4pm  
**Moonta** Blanche Terrace, Moonta SA | ☎ (08)8828 1251  
 OPEN Monday-Friday 9am to 5pm | Saturday, Sunday and Public Holidays 10am-3pm  
 w visitcoppercoast.com.au | e visit@coppercoast.sa.gov.au



Yorke Peninsula Tourism would like to extend our sincere thanks to Shane Warrior of Nharangga Aboriginal Cultural Tours for writing this heartfelt Welcome to Country. Our sincere thanks also to Tania Wanganeen of Nharangga Warra Wambana for sharing her knowledge of Nharangga language.

We also extend our sincere thanks to the Point Pearce Aboriginal Corporation, the Nharangga Aboriginal Progress Association and Narungga Nation Aboriginal Corporation, and acknowledge their roles as stakeholders and leaders in our community. We acknowledge the Nharangga people as the Traditional Custodians of Guuranda/Yorke Peninsula and we pay our deep respects to their Elders past, present and emerging.

Ngayi yunggu.

Gulawulgawi Ngunda Nhagu – Cape Spencer Lookout, Dhillba Guuranda-Innes National Park

## CONTENTS

- 1 Welcome to Country
- 3 Welcome to Yorke Peninsula
- 4 Experience Yorke Peninsula
- 8 Self-drive
- 11 Family Fun
- 14 Nature & Wildlife
- 18 Fishing & Boating
- 20 Eat & Drink
- 25 Art, Culture & History
- 28 Stay
- 38 Events
- 40 Map
- 42 Towns
- 56 Getting Here & Around
- 58 Useful Information
- 59 Advertiser Index
- 60 Town Facilities

[yorkepeninsula.com.au](http://yorkepeninsula.com.au)



Scan the QR code  
to read online.

Cover: Neptune's Surf Coaching and Experiences  
This page: Ponalowie Bay,  
Dhilba Guuranda-Innes National Park

The official Yorke Peninsula Visitor Guide  
proudly produced by

**HWR**  
MEDIA

**Yorke**  
Peninsula



A 90-minute drive  
from Adelaide delivers  
you to one of Australia's  
most beautiful and  
bountiful regions.

Spend time with the  
characters who make  
our region shine.

They'll lead you on  
adventures as grand as  
our coastline, uncover the  
treasures of the past and  
share the abundance of  
our natural environment.

Join us and discover the  
pure joy of Yorke Peninsula.

Your holiday starts here

## EXPERIENCE YORKE PENINSULA



Ardrossan

### Catch a blue swimmer crab

Ask any chef, nothing beats a blue swimmer crab. Join Kim on an Ardrossan Catch 'n' Cook World Tour – he'll have you raking the shallows for the prized local delicacy and even show you how to cook them. You'll have a heap of fun and go away equipped for life! Rakes at the ready...



Brindabella

### Set sail on Brindabella

Board one of the nation's most heroic yachts to sail off one of Australia's most sublime coasts. *Brindabella* conducts a program of half-day sailing adventures out of Port Vincent – your chance to experience what a Sydney To Hobart Race winner can actually do. Help out while she's under sail or just sit back and soak it all in.



### Be astonished by Dhilba Guuranda-Innes National Park

Dhilba Guuranda-Innes National Park is a wild, rugged stretch of coast. It's also home to a diverse array of attractions: you'll encounter gnarly surf breaks and rusting shipwrecks; Nharangga dreaming stories and a ghost town left by Scottish miners; roaming mobs of emus and (if you're lucky) rare marsupials and bettongs, given a second lease on life thanks to a rewilding program.

SA Eco Tours, West Cape Lighthouse, Dhilba Guuranda-Innes National Park



Marion Bay Tavern, Marion Bay/Gaggadawi

## Drink in the view at a pub

Many of the peninsula's coastal towns were grain ports, serving farmers of the late 1870s. These settlements were small enough to ensure the pub was never too far from the jetty – which is why your cold beer and local food menu is likely to be accompanied by sparkling seas and salty breezes. Enjoy.



Moonta Mines, Moonta/Munda

## Do the train tour of Moonta Mines

Jump on the jolly, narrow-gauge train and enter a landscape that's as stark as it is important. You'll learn how one of the nation's largest copper deposits was found thanks to wombats, why Cornish people were brought into Northern Yorkes and even why Cornish pasties have a crusty 'handle'...

## Wake up somewhere wonderful

Feel like a sea change? Yorke Peninsula is home to stylish new boutique accommodation overlooking the region's paddocks, beaches and seafronts. Retreats like My Sister And The Sea, Love & Mutiny, Bayside Glamping and five-star Seafire will have you feeling far-flung and fabulous.



# SELF-DRIVE

YORKE PENINSULA IS A DREAM DRIVING DESTINATION. HERE'S A TOP-TO-TOE SAMPLE ITINERARY SPREAD OVER NINE DAYS...



Bond Store Wallaroo, Wallaroo/Wadla Waru



Bute silo mural, Bute



Splash Town, Moonta Bay

**Day 1:** Indulge yourself in **Wallaroo**, starting with breakfast on the deck at North Beach Kitchen. Follow it up with a two-kilometre walk along Wallaroo's famous stretch of sand, or hit the greens at The Dunes golf course at Port Hughes, designed by Greg Norman. Take a late lunch at the Bond Store Wallaroo and enjoy the 'Brewer For A Day' experience. Alternatively, take to the waves with a paddleboard hired from Wallaroo Marina Apartments. If you've got little ones, head to Tarnasey Farm where they can feed the animals, collect some eggs and be a little farmer for a while.

If you're overnighing in Wallaroo, be sure to watch the nightly Wallaroo Silo Light Show – a must-see art projection with a streamed commentary. Alternatively, head to **Port Broughton** for a light show of a different kind, the sun setting off the gorgeous little fishing town at the top of Yorkes.

Overnight in Port Broughton or Wallaroo.

**Day 2:** Head to **Kadina**, a great play destination. If you've got kids, they can burn off some energy at the Farm Shed Museum and Play Centre; Copper Coast Putt Putt is an award-winning 18-hole mini golf course and fun for the whole family. There are plenty of eateries in the town centre, so grab a bite and head to the Apex and Treetops playground in Victoria Square. It's worth doing a short trip out to the small town of **Bute** to seek out the grain silo. The mural on the giant tank won 'Australia's Best Rural Art' in the 2022 Australian Street Art Awards. It's part of the Yorke Peninsula Art Trail, a self-drive trail which has more than 90 art-related attractions.

Round the day off by getting back to nature with a walk on South Beach at **Port Hughes**.

Overnight Kadina or Port Hughes.

**Day 3:** Next stop is **Moonta**, where copper was discovered in 1861 and skilled miners were brought from Cornwall. Do a guided tour of Moonta Mines on a tourist train. There's

history galore at the old school, which has been converted into a museum.

Back in Moonta, stroll the Main Street for some excellent vintage shops. Stop at Taste the Yorke to organise a picnic of local produce before hiring an e-bike from Copper Trails Bike Hire – now you're all set to do the hour-long Copper Rail Trail, a dedicated cycle and walking trail. When the sun is low, head to **Moonta Bay** to find a secluded piece of sand. If it's a hot one, you can cool down at the Splash Town Water Park; it's free to enter and kids love it!

Overnight in Moonta Bay.

**Day 4:** Today, you're going south-east to **Maitland** (detouring to Sunny Hill Distillery if you're a fan of craft spirits made from local grain) and then a little further to **Port Victoria** (detouring via Barley Stacks if you prefer wine!). Spend the day strolling the interesting town of 'Port Vic': there's a geological trail on the foreshore, signage indicating the many wrecks offshore and a fabulous little museum at the start of the (very long!) jetty. The museum tells the amazing story of the mighty windjammers, arriving from Europe to collect grain, and their skippers who used to race their vessels home. Take lunch in the terrific old pub overlooking the jetty or grab some takeaway from the kiosk.

Next, head south to **Minlaton**. Check out the Bristol monoplane flown by WW1 pilot, Harry Butler, and stroll the Main Street – home to a great bakery and several boutique shops. Book a walking tour with Shane Warrior of Nharangga Aboriginal Cultural Tours, who will show you the fascinating Indigenous histories of the surrounding country and give your kids a few lessons on the art of throwing boomerangs...

Round off the day with a visit to fabulous Watsacowie Brewery.

Overnight Minlaton.



Ardrossan

**Day 5:** Head east to **Ardrossan**. Book ahead with Catch 'n' Cook World Tour for a blue swimmer crab adventure, suitably timed by Kim so you can wade out when the tide's turning to rake for blue swimmer crabs. Call into the Ardrossan Museum for the low-down on local barley-growers and the stump-jump plough, a local invention that changed agriculture in southern Australia. There's plenty of cafés for lunch and a number of good takeaway options as well.

Before the sun sets, head into Port Vincent where you'll overnight.

**Day 6:** Start in **Port Vincent**, fishing mecca and family playground. Enjoy breakfast at the Port Vincent Kiosk overlooking the sand and water. Get out into the waters off the popular family beach. You can hire a kayak or paddleboard from the Foreshore Caravan Park.

Drive to Entrance 45 of Walk the Yorke where you can stroll the remote beach section taking in caves and geological formations. Head into **Stansbury** for lunch at the award-winning Dalrymple Hotel, then head out as a 'Deckie for a Day' to try your

hand on a working oyster lease – and enjoy some oysters fresh from the sea. The town is home to a new micro distillery, Lost Tide Spirit Co. Call in to see Keira and Bennett at their cellar door in the historic Oyster Bay Hotel building on the foreshore.

Overnight Port Vincent or Stansbury.

**Day 7:** After breakfast, follow a section of the Southern Yorke Peninsula Mural Trail – a self drive tour that leads you past eight incredible murals. Start at Port Vincent's water tower and follow the trail via Stansbury, **Coobowie**, **Port Moorowie**, **Wool Bay**, **Minlacowie** and **Edithburgh** (check out the snorkelling around the jetty).

Take lunch at the **Point Turton** General Store or the Tavern then continue to **Corny Point**. Spend the afternoon exploring the stellar beaches or, if you've pre-booked, embark on a surfing lesson with Neptune's Surf Coaching. The group has all the gear you need – and also hires out paddleboards and snorkelling kit. Continue to gorgeous **Marion Bay**, a shining light for fishers, surfers and beach lovers.

Overnight Marion Bay.

**Day 8:** Grab a BIG breakfast at the Marion Bay General Store before doing a fishing charter. This is big fishing country, so get ready for a day of adventure with Reef Encounters Fishing Charters.

Overnight Marion Bay.

**Day 9:** After breakfast, provision up at the General Store before heading into **Dhilba Guuranda-Innes National Park**. Stop at the Visitor Centre to get all the information you need to make the most of this remarkable park. Soak up the natural scenery, see the shipwrecks and lighthouses, prepare for lively wildlife sightings and don't miss walking the streets of the historic **Inneston** ghost town.

In the afternoon, do a (pre-booked) Marion Bay Ocean Safari, departing from **Pondalowie Bay** in the park. You'll see the raw, rugged beauty of this epic south-east-facing coast from the water – and very likely encounter the likes of dolphins and white-bellied sea eagles. Overnight in the park, either camping or staying in one of Inneston's restored heritage cottages.

## FAMILY FUN

YORKE PENINSULA IS HOME TO A RAFT OF NEW ADVENTURE AND PLAY OPTIONS. READY TO JUMP IN?



Tarnasey Farm,  
Wallaroo/Wadla Waru



Neptune's Surf Coaching, Corny Point/Nhildidji

### Wet and wild

Join Kim from **Catch 'n' Cook World Tour** on a family crabbing expedition off Ardrossan. You and the kids (aged six and up) will get rakes, buckets and a quick lesson on how to catch delicious blue swimmers. After you've caught a feed of crabs, you can take them home or have Kim barbecue them on the beach!

Give the kids the opportunity to connect with the landscape, the marine life and the world's oldest living culture on a walking tour with Shane Warrior of **Nharangga Aboriginal Cultural Tours**. Shane loves to introduce kids to the stories, scientific knowledge and heritage of his people – as well as the joys of the boomerang! Something that he hopes will stay with them forever.

Kids from five can learn to surf at Corny Point with **Neptune's Surf Coaching**; the squad of local surf instructors provide boards and wetties and reckon they can have you up and standing in no time.

To stay dry while you're waterborne, **Marion Bay Ocean Safari** has special pricing to accommodate children on their two-hour boat experiences out of Marion Bay. The safari takes in spectacular scenery, dolphins and white-bellied sea eagles.

There are kayaks and paddleboards for hire from the **Port Vincent Foreshore Caravan Park** or **Wallaroo Marina Apartments** – the perfect way to take in the fresh air on the water and try something new. But for the ultimate sailing adventure, kids aged 12 and up are welcome on **Brindabella**, the 80-foot

maxi yacht that occasionally sets sail out of Port Vincent.

### Wheel-y cool

Nothing quite brings a family together like a bike ride. **Walk The Yorke** comprises more than 500 kilometres of walking and cycling tracks and has plenty of sections to suit. For the younger kids, there's sedate and secluded off-road sections, while older kids will love the cliff-top sections that require a little more energy. Bikes can be hired from **Copper Trails Bike Hire** in Moonta and **Wallaroo Marina Apartments** in Wallaroo; some caravan parks and accommodation options also offer bike hire.

Pack the bikes, skateboards and scooters, there's a skate park and bike track near you... For the younger ones, you'll find a **learn-to-ride bike track** in Moonta. Wallaroo, Port Broughton, Minlaton and Moonta all have fantastic **skate parks**. There are **pump tracks** at Corny Point and Port Broughton. And you'll find a stellar **BMX track** in Maitland.

### When nature calls

Native animals can easily be seen at **Dhilba Guuranda-Innes National Park** (first one to spot an emu and a kangaroo gets to choose dessert). Minlaton has a **wildlife park** in the centre of town with kangaroos and emus and is extra-special in spring when the emu chicks are hatched.

Working farms are great for hands-on experiences for the whole family. **Tarnasey Farm** near Wallaroo offers behind-the-scenes Little Farmer Tours, a chance for

kids to feed, pat and cuddle animals to their hearts' content.

### Play zones

Call in at any sizable town on the peninsula and you'll find a playground – usually with happy kids blowing off a bit of steam. Some of our favourites include **Port Broughton Foreshore Playground** (this inclusive, all-abilities playground is open 24 hours for children with physical and intellectual disabilities), Yorketown's **Weaners Flat Reserve** (walk around the salt lake before arriving at the modern playground with swings and climbing frames), and the **Point Turton Natural Playspace and Bike Track** – a very cool space with hill slide, nest swing, play kitchen, water pump and sand play.

**Splash Town** is Moonta Bay's increasingly famous free-to-use water park. The whole place cascades with water and features a bunch of water slides the kids can race on, as well as splash zones and the always-popular gizmo that dumps a boat-load of H<sub>2</sub>O on the heads of little 'uns...

Award-winning **Copper Coast Putt Putt** at Kadina is also something of a legend – not least among super-competitive adults... The 18-hole course features different themes and has golf clubs to suit every aged player. And it's only \$5 a head. Kids also love Kadina's **Copper Coast Indoor Play Centre**, great in summer and winter. Still in the Copper Coast, a **Miniature Railway** that runs the first and third Sunday of each month costs a tiny \$3 for a ride!

Did someone say ice cream?



Port Broughton All Abilities Playground, Port Broughton



**Copper Coast Putt Putt**  
Yorke Peninsula's newest attraction  
Copper Coast Putt Putt provides fun for everyone.

For just \$5 per player, enjoy the 18-hole course with holes of different themes and varying difficulty.

Open daily from 10am–4pm.  
Only closed Christmas Day and Good Friday.

50 Mines Road, Kadina  
Ph: (08) 8821 2333  
www.visitcoppercoast.com.au



**Copper Coast Splash Town Water Park**

Yorke Peninsula's Best Attraction

The Splash Town Water Park guarantees fun for the whole family. Racer Slides, Water Mushrooms, Giant Water Bucket and much more. Free entry, change room and toilet facilities. Parental supervision required. Located at Bay Road, Moonta Bay. For more information, contact the Copper Coast Tourism Centre.

Bay Road, Moonta Bay  
Ph: (08) 8821 2333  
www.visitcoppercoast.com.au



**Copper Trails Bike Hire**

Explore with us and make memories for a lifetime

- E-Bike and push bike hires
  - Sales and accessories
  - Service and parts
  - Self-guided tour packages
- Open seven days.

40 George Street, Moonta  
Mob: 0447 764 777  
Book at www.coppertrailsbikehire.com



# NATURE & WILDLIFE

SURRENDER YOURSELF TO WILD  
WATERS, ENDLESS BEACHES AND  
SUBLIME LANDSCAPES



Copper Trails Bike Hire, Moonta/Munda



Walk the Yorke

## Get closer to nature

**Marion Bay Ocean Safari** offers a series of coastal tours out of Dhilba Guuranda-Innes National Park. The award-winning cruise operator takes guests on a two-hour Coastal Experience in search of dolphins, white-bellied sea eagles and eastern ospreys; a three-hour cruise extends to an exploration of outer islands, and bespoke tours and charters can also be arranged.

Shane Warrior of **Nharangga Aboriginal Cultural Tours** in Minlaton will show you the landscape through the eyes of the Indigenous people who have called the area home for millennia. Shane will show you handcrafted tools, bushfoods, knowledge, skills and science – secrets of the Nharangga hiding in plain sight.

If photography is your thing, Steph from **Ballara Art and Lifestyle Retreat** (Warooka) can organise small group photography tours with access to exclusive locations. As well as a local guide, some tours include a guest photographer to share tips and tricks.

**SA Eco Tours** does small-group tours from Adelaide to Yorke Peninsula on the first Monday of each month. Their three-day Coastal Wilderness Adventure takes in the southern parts of Yorke, including Marion Bay and Corny Point, with a full-day tour of **Dhilba Guuranda-Innes National Park**. The tour is via 4WD vehicle and is fully hosted.

One of the more unusual tours is a self-drive tour of the **Yorke Peninsula Salt Lake Trail**. The town of Yorketown is surrounded by some 200 salt lakes which were once harvested for their salt. Depending on conditions, some of the lakes present as bright pink (courtesy a cyanobacteria); take amazing photos from the new Y-shaped platform at the aptly-named Pink Lake. The trail takes you past some of the best and most accessible salt lakes, with plenty of interpretative signage highlighting the history of salt production in the area.

Cape Spencer Lighthouse, Dhilba Guuranda-Innes National Park

The Djulda-wawa Badja ('Resilient Coast') project is strengthening Yorke Peninsula's coastal landscapes. Projects include the successful introduction of osprey breeding platforms at multiple locations, including Price, Port Davenport and Edithburgh.

## Walk The Yorke

Want to get intimate with the peninsula's coastline? Walk the Yorke comprises 500 kilometres of sealed and natural trails which can be walked or cycled.

These sections offer solace and scenery and are designed to be done in small bites or on extended hikes. Try these for size...

**Coobowie to Edithburgh** (six kilometres) passes Coobowie Estuary, a haven for Australian and migratory birds.

**Port Victoria to Balgowan** (24.8 kilometres) Take in spectacular cliffs, views of Wardang Island and Nharangga Aboriginal Lands. It includes the new four-kilometre Volcano Trail which reveals dramatic geological histories behind unusual rock formations on the beach.

**Gym Beach to Formby Bay** (9.6 kilometres) follows native vegetation along the cliff-tops, headlands and dunes.

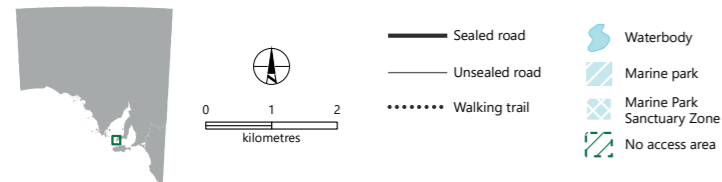
**Marion Bay to Gleasons Landing** (59 kilometres) is a multi-day walk taking in spectacular rugged cliffs, high-energy beaches, huge dunes and quiet, inland woods.

Use the QR code on page 17 to plan your walk or call into a **Visitor Centre** to get more information and maps of your section of walk.

Bikes can be hired from **Copper Trails Bike Hire** in Moonta; some caravan parks and accommodation options also offer bike hire.

If you'd like to join a fully guided walk, **Big Heart Adventures** offers small-group walking tours of Yorke Peninsula out of Adelaide, with transport, guides and accommodation arranged.

# DHILBA GUURANDA-INNES NATIONAL PARK



DEW does not guarantee that this map is error free. Use of the map is at the user's sole risk and the information contained on the map may be subject to change without notice. Cartography by DEW, Mapland - 2022

Visit [parks.sa.gov.au](http://parks.sa.gov.au)  
 Get the Avenza Maps app to use park maps on your phone.  
 For more information, contact:  
 Department for Environment and Water  
 E: [parks@sa.gov.au](mailto:parks@sa.gov.au)  
 P: 08 8207 7700



Ethel Beach, Dhillba Guuranda-Innes National Park

## Dhillba Guuranda-Innes National Park

Arguably the jewel in Yorke's crown, **Dhillba Guuranda-Innes National Park** is one of South Australia's most spectacular parks. Your journey begins a little way south of Marion Bay, at the Visitor Centre located at the park's entrance. Get your bearings, your self-drive maps and an idea of the treasures in store, including famous surf beaches, sweeping views, historic lighthouses, the relic town of **Inneston** (left by hardy Scottish gypsy miners in the early 1900s) and bookable accommodation options. **Inneston Lake** and **Deep Lake** are home to living stromatolites. These structures are formed in rock by an ecosystem composed of several bacteria and cyanobacteria – among the earliest known lifeforms on earth (existing 3500 million years ago) and thought to be extinct until recently. Though they're not

visible from the shores, their presence makes both sites of tremendous scientific importance.

To gain a different perspective on this rugged part of the coast, take a cruise with **Marion Bay Ocean Safari**, departing from Pondalowie Bay inside the park. And check out the seven renovated heritage lodges within Inneston, which make the perfect base for exploring the park. You can overnight in these lodges (book online when you book your vehicle entry) – a thrilling way to step into the past and experience the uninhabited village which once provided for 200 mining families. **SA Eco Tours** offers a three-day Coastal Wilderness Adventure to share insights on the park's Indigenous heritage and ecology while exploring its spectacular landscapes.

As well as hosting a large population of kangaroos and emus, the park is host to a great diversity of flora and fauna

including recently released Yalgi (the Nharungga name for brush-tailed bettong) as part of the **Marna Banggara** project. This ambitious project aims to restore southern Yorke Peninsula's spectacular landscape by returning locally-extinct species and reinvigorating the ecological processes that ensure the bushland's health. Learn more at [marnabanggara.com.au](http://marnabanggara.com.au)

The park is surrounded by **Southern Spencer Gulf Marine Park**, home to pods of dolphins year-round, and schools of southern right whales from May to September.

Scan the QR code for more information on Walk The Yorke.



Dhillba Guuranda-Innes National Park

# FISHING & BOATING

BRILLIANT EXPERIENCES ON  
BEAUTIFUL WATERS...



Catch 'n' Cook World Tour, Ardrossan



Dhilba Guuranda-Innes National Park

## Fishing charters

If you're looking for an unforgettable fishing adventure (as well as some all-important local knowledge) you won't go wrong with a fishing charter. Try these local operations...

**Port Hughes Fishing Charters** (out of Port Hughes): Skipper Mick offers fantastic inshore and deep-sea charter fishing experiences in the Spencer Gulf. Full-day charters accommodate four to eight guests.

**Reef Encounters Fishing Charters** (out of Marion Bay and Pongalowie): Join this award-winning operator on day-long or multi-day tours out to remote locations. You'll target deep-water table fish or trophy fish including southern bluefin tuna and samsonfish.

**Reel Screamer Fishing Charter** (out of Point Turton): Regarded as a 'bucket list fishing charter', Reel Screamer has been operating for two decades. Do a full-day fishing tour or wet a line for two hours in the bay.

## Saltwater adventures

The newest and arguably one of the most spectacular operators in the Gulf St Vincent is **Brindabella**, now offering half-day sailing trips for up to 34 guests. When the maxi yacht is in residence, she's too big for the Marina! **Brindabella** visits in school holidays and on scheduled weekends – check the website for details.

It's not widely known that many Coffin Bay oysters start life off the coast of Yorke. Learn all about the business of growing oysters when you join **Pacific**

**Estate Oysters** on a boat tour out of Stansbury. As a **'Deckie for a Day'** you'll visit the racks, pull on a pair of waders, help with a bit of harvesting and savour some farm-fresh oysters.

One of Yorke's most celebrated delicacies is fresh blue swimmer crab. Find out what all the fuss is about on a blue swimmer crab experience offered by **Catch 'n' Cook World Tour** in Ardrossan. Local crabber Kim will give you all the gear and take you out to the shallows; after you've hauled in a few blueys, you can take them home or Kim will barbecue them for you.

Catch 'n' Cook World Tour also offers a **King George Whiting Catch 'n' Dine** experience, operating out of Wallaroo. The seven-hour, family-oriented adventure will have you casting for the fabled fish before your catch is served to you in a local restaurant.

Thanks to a history of wheat exporting, Yorke's coastline has some spectacular timber jetties. Join locals and visitors casting for tommies, jigging for squid and dropping pots for crabs. You'll find plenty of **fishing gear** for sale in local supermarkets and hardware stores.

Boat owners will find plenty of good boat ramps and beach launching facilities – many with all-weather ramps and dual lanes. When in doubt, ask around for the heads-up on local facilities. Many caravan parks and holiday houses have fish cleaning facilities. All boat ramps in Barunga West Council (Port Broughton and Fishermans Bay) are free to use.

## Crabbing tips

Blue swimmer crabs are best caught during summer. Try your luck along the beaches from **Port Gawler** through **Ardrossan to Stansbury** in Gulf St Vincent, or along the Spencer Gulf to **Port Broughton**.

- 1 It's easy! All you need is a tub and a rake (available for about \$10 in most local shops). Don't forget to wear old sneakers – a crab will go for your toes!
- 2 The best time to head out is when the tide turns to come back in.
- 3 Rake where the soft sand meets the weed. When a crab grabs your rake, lift it into your tub!
- 4 The best months for crabbing are September to April as the waters are warmer and more productive.
- 5 Be mindful that crabs have a legal size and bag limit, and that females carrying eggs (roe) can't be taken.

Scan the QR code for information on catch limits and seasonal or species closure.



## EAT & DRINK

FRESH SEAFOOD, BEACHSIDE CLASSICS AND LOCAL CRAFT BEERS – THE PENINSULA HAS A HUGE SPREAD LAID ON, JUST FOR YOU!



Capella's, Moonta/Munda



Bond Store Wallaroo, Wallaroo/Wadla Waru



Port Broughton Hotel, Port Broughton



Lost Tide Spirit Co., Stansbury

### Local menus

Most larger towns offer great options for lunch and dinner while smaller towns play host to lovely cafés, bakeries and kiosks serving takeaway. Visit the QR code for a full listing, but here are a few favourites...

**Northern Yorke Peninsula:** The **Bond Store Wallaroo's** Parilla restaurant is renowned for serving succulent local fish fillets and prime steaks off a charcoal grill. The **Port Broughton Hotel's** dining room has a seaside ambience, a lively beer garden and a great menu.

There's no shortage of cafés in the north. **North Beach Kitchen** in Wallaroo has absolute beachfront and does a banging garfish burger. The town is also home to **The Smelter** (minutes from the beach) and **Treasures and Treats Café** (serving homemade food). **Capella's** in Moonta is great for dine-in and takeaway; **Cracked Pepper** and **Goyder Street cafés** in Kadina do coffees and takeaway; and **Bay Street Café** in Port Broughton is another local hero. **Port Hughes General Store** next to the Tavern does great seafood classics. **Nook & Nourish** in Moonta is about healthy alternatives. **Karimi's Kitchen Takeaway** in Alford is a hidden delight and a must-do when travelling along the Spencer Highway. Got a big day planned? **Taste the Yorke** in Moonta offers stylish takeaways (full breakfasts, lunch wraps and daily curries). Order ahead or pick something to suit at their George Street shop.

Two specialties to try in the north: Cornish pasties (served in most cafés) and gelato, served in **The Coffee Barn Gelateria** in Moonta where you'll find 16 lush flavours of traditionally made gelato.

**Central Yorke Peninsula:** Centrally speaking, the **Ardrossan Bakery** is close to the foreshore and there's classic takeaway from **Ardrossan Seafood and Schnitzels** and **Ardrossan Chinese Meals**. **The Coffee House** and **Wilma's on the Yorke** serve up coffee and lunch. **Port Victoria Kiosk** does great burgers and **Le Petit Café** is loved for its toasties. The **Maitland Markets** are open weekly and centrally located (you'll find lots of local producers selling their wares). Don't go past **Maitland Bakery** and **Nanna Jayne's Café** is popular for breakfast.

**Southern Yorke Peninsula:** In Port Vincent you'll find excellent pizzas at **The Provideore**, while **The Kiosk** on the beach is a true institution. Edithburgh's **Location Café** is always busy and has a nice garden, and the **Minlaton Bakery and Café** is exceptional. **Nel's Café** in Yorketown does delicious panini and expect to see long queues at the popular **Yorketown Bakery**. **Point Turton General Store & Bakery** has heavenly cakes, pies and seafood pizzas on Friday. **Salt** restaurant near Warooka is owned by local fishermen – their fast-food restaurant has prawns, oysters, scallops and lobster in season. Marion Bay has no shortage of great takeaway thanks to the **Marion Bay General Store** while the **Beach Break Café** is a cheerful mobile van that pops up around the national park and is loved for pies and coffee.

Pubs have great menus, they're well-priced and many of them serve up seaside views. Some favourites include the **Ardrossan Hotel**, **Port Broughton Hotel**, **Tavern on Turton**, **Port Victoria Hotel**, **Dalrymple Hotel** in Stansbury, the **Minlaton Hotel** (with a Caffe Primo), The **Port Hughes Tavern**, **The Wheatsheaf Hotel**

at Price, **The Ventnor** in Port Vincent and the **Marion Bay Tavern**. The natural place to break a journey to/from the peninsula is Port Wakefield, home to the **The Rising Sun Hotel**. This family-owned and family-friendly pub has a games room for the teens and garden for the little ones.

### Drink up!

Yorke Peninsula has a burgeoning craft beer industry. **Watsacowie Brewing Company** at Minlaton is a lively, rustic space that draws people in with craft beer, ales and cider – and plenty of live music. **Bond Store Wallaroo** produces 12 beers and offers a 'Brewer For A Day' experience for those who've always fancied themselves as a master brewer. **Hedonbar Brewing Company** in Kadina is the newest brewery to bring local grains to bar taps – their friendly shed is on the northern side of the Farm Shed Museum.

**Sunny Hill Distillery** near Artherton produces spirits and liqueurs from grains grown in their paddocks; they offer tastings as well as a production-floor tour hosted by the distiller with a private tasting to finish. The **Bond Store Wallaroo** also produces a range of gin in its micro-distillery. Stansbury is home to **Lost Tide Spirit Co**; the new cellar door serves small-batch gin, cocktail liqueurs and vodkas.

For locally made wines, try **Barley Stacks Wines** south of Maitland. The first commercial vineyard and winery to be established on the barley belt of the Yorke Peninsula, it has been producing since 1996. It offers tastings and serves pizza, daily. **Emoyeni Wines** in Ardrossan has tastings by appointment, or on Sundays when the winery is open to the public for a mix of live music, food and wine.



Seafood on Spencer, Port Broughton

### PICNIC TO GO

Taste the Yorke has a variety of local produce and lunch options. These include grazing boxes, fresh wraps or the traditional Cornish Pasty.

See advertisement page 47



### Tavern on Turton

Offering al fresco dining and à la carte in the evening

Experience the feeling of unhurried dining and take time to enjoy food and each other's company and of course, the stunning views. Bookings essential during holiday period. Function bookings also welcome.

Trading from Wednesday through to Monday. Six days 10am–midnight, hours may vary. Lunch 11:30am–2pm, dinner 5:30–8pm.

223 Bayview Road, Point Turton  
Ph: (08) 8854 5063  
www.pointturtontavern.com.au



### Go to the source!

There's nothing like a sizzling barbecue to finish a great day on Yorke Peninsula. For freshly caught seafood, try **JDF Seafood** in Minlaton (this local fisherman also offers butcher products and fresh bread), **BA Fisheries** in Stansbury (for local catches and plenty of home-grown oysters), **Lower Yorke Seafood** west of Warooka, **Gill's Fisheries** at Port Victoria and **JJ's Copper Coast Seafood** in Wallaroo. Many butchers source their meat from local farmers. Try **Stansbury Butcher & Deli**, **Moonta Gourmet Meats** and **Warooka Country Meats**.

To source local produce such as honey, olive oil and lentils, look out for farmgates on your travels and local markets (including **Ardrossan**, **Maitland** and **Stansbury**). You can also drop into local Visitor Information Centres or visit **Taste the Yorke** in Moonta.

If you want to whip up a DIY feast, **Catch 'n' Cook World Tour** in Ardrossan can have you catching fresh blue swimmers; and **Copper Coast Chef's Sip & Roll Sushi Making** classes in Wallaroo can teach you how to turn seafood into something that's sure to impress. To make a splash with a picnic, contact **Grazing Yorke** – they can lay on a five-metre bell tent, rugs, cushions, tableware and do the catering.

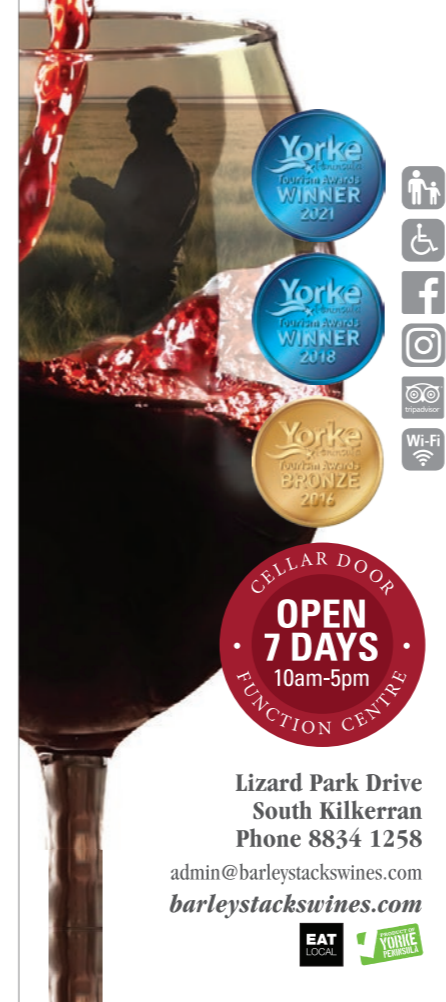
There's plenty of local seafood served up in local festivals. The **Gynburra Festival** in Port Victoria (end of January) celebrates Nharangga fishing culture and identity; it hosts the traditional 'Butterfish Competition' which sees locals vying to spear the biggest butterfish and earn the title of 'Butterfish King'. **Seafood on Spencer** and **Feast on the Foreshore** (March/April) enliven the fishing town of Port Broughton: expect the ultimate 'Gulf to plate' experience with music, fishermen, celebrity chefs, and plenty of fresh catches.

Scan the QR code for more information.



BARLEY STACKS WINES

# Uniquely Yorke Peninsula



Lizard Park Drive  
South Kilkerran  
Phone 8834 1258

admin@barleystackswines.com  
barleystackswines.com



## RESTAURANT DISTILLERY MICROBREWERY

SAMPLE AMAZING GINS  
TASTE HAND CRAFTED BEER  
ENJOY DELICIOUS FOOD  
BOOKINGS ADVISABLE - WALK-INS WELCOME

13 Owen Terrace, Wallaroo | (08) 8823 3809  
info@bondstore.net.au | www.bondstore.net.au





Join us in our beautiful modern bistro offering a large à la carte menu – steak, seafood, pasta, pizza, salad and vegetable bar. Enjoy our modern gaming room, front bar and TAB room, or stay the night in one of our 11 recently refurbished motel units, all with ensuites.



**8837 3008** ★ 36 FIRST STREET, ARDROSSAN  
[www.ardrossanhotelmotel.com.au](http://www.ardrossanhotelmotel.com.au)

GAMBLING HELPLINE  
 1800 858 858  
 24/7 • FREE • CONFIDENTIAL



Join us at the Minlaton Hotel for a friendly drink in our front bars or dine in and enjoy Caffe Primo's extensive menu which caters for the whole family. Minlaton Hotel really does have it all boasting a modern gaming room with all the latest machines, TAB, pool room, Thirsty Camel bottleshop and recently refurbished motel units, with ensuites.



**8853 2014** ★ 26 MAIN STREET, MINLATON  
[www.minlatonhotel.com.au](http://www.minlatonhotel.com.au)

GAMBLING HELPLINE  
 1800 858 858  
 24/7 • FREE • CONFIDENTIAL

### Yorke Peninsula's First Craft Distillery – 100% Crop to Drop Sunny Hill Grain





Made on Site Vodka, Gin, Brandy, Liqueurs, Whisky and Rum  
 Local Beer, Wine and Seltzers Available  
 Live Food and Music Days Monthly  
 Bring Your Own Picnic Out to the Venue.



Kid and Dog Friendly  
 Tours of the Distillery Available by Appointment  
 Diverse Range of Cocktails  
 Function Hire Available 7 Days a Week.

**HOURS:** Public Holiday Mondays | School Terms: Thursday-Sunday 11am-6pm | School Holidays: Wednesday-Sunday: 11am-6pm

8658 Upper Yorke Road, Arthurton **M:** 0400 843 904 **E:** [manager@sunnyhilldistillery.com.au](mailto:manager@sunnyhilldistillery.com.au) **W:** [www.sunnyhilldistillery.com.au](http://www.sunnyhilldistillery.com.au)




**WATSACOWIE**  
 BREWING COMPANY

☼ Craft beers and artisanal beverages all made on-site  
 ☼ Dog Friendly\* ☼ Live Music

9 Depot Road, Minlaton SA  
 Ph: (08) 8822 7117  
[watsacowie.com.au](http://watsacowie.com.au)  

Please check our website or Facebook for opening hours.  
 \* Dogs must be on a lead at all times



## ART, CULTURE & HISTORY

CONNECT WITH THE HEART AND SOUL OF OUR REGION

Studio Surf, Marion Bay/Gaggadawi

## Connect with Yorke's culture

**Go back to the beginning:** Award-winning Quenten Agius has been conducting his Aboriginal Cultural Tours for years, bringing stories, legends and landscapes into the light. Check out also Nharangga Aboriginal Cultural Tours, sharing their knowledge of 'many yesterdays'. Artist Sonya Rankine shares culture and craft through basket weaving workshops, brought to you at your accommodation.

The **Yorke Peninsula Art Trail** features more than 90 murals, sculptures and galleries. Here are just a few of the highlights (check out the QR code for the full list):

**See Australia's best rural murals!** The Bute silo mural by artists Scott Nagy and KrimsOne won gold in the Best Rural Art category at the Australian Street Art Awards in 2022. The Wool Bay water tank mural – recognising Nharangga culture – is recognised as Australia's best rural art experience.

**Salute the father of the RAAF:** Air Marshal, Sir Richard Williams, is regarded as the founder of the RAAF. Born in Moonta to Cornish parents, he was the first pilot trained in Australia. After WWI, he campaigned for an Australian air force run independently of the army and navy. A statue was unveiled in Moonta in 2021 to coincide with the centenary of the RAAF.

**Meet the seaside fairies:** Only small children (and those who believe in magic) will be able to see the fairies of Port Clinton. Head to the corner of Cooper Street and Cumberland Road and look for very colourful, very small doors. It also helps to keep very, very quiet...

**Think big and see silos in a whole new light:** Wallaroo hosts an outdoor art

exhibition every night, thanks to the Wallaroo Silo Light Show. Local history, artists and attractions are projected onto the huge Viterra silos and can be viewed from various locations. There's a dedicated live-stream channel for commentary accompanying the images displayed.

**Embrace all things Cornish:** Kernewek Lowender is the world's biggest Cornish festival. It returns to the Copper Coast on May 12 to 18, 2025 – a week of dancing, singing, poetry, art and food, to celebrate the region's rich connection with Cornwall.

**Be inspired by art that cleans up the beach:** Salty Art Studio in Moonta Bay offers a wide range of artworks and creations made from beachcombing finds. Think sculptures made from rusty wire and driftwood, bowls made from ghost rope and vessels woven from natural fibre.

## Workshops

**Do a jewellery-making workshop at your seaside accommodation:** Jasmine Swales of Studio Surf at Marion Bay offers occasional workshops. Join one of her 'Silver Sessions' to learn how to make rings and pendants using silver and sea glass. If you have a group of two to six, Jasmine can bring her mobile studio to you!

**Make your own glass bead jewellery:** You'll be working with hot glass at Meant to Bead in Edithburgh. Using quality glass, tools and burners, you'll have the opportunity to make a bracelet, necklace or earrings in your three-hour class.

**Retreat to a homestead and indulge your creativity:** Ballara Art & Lifestyle Retreat is a century-old stone homestead in

Warooka. It offers multi-day packages built around creative pursuits. These include art and photography-focussed retreat experiences, one-day art workshops and children's art classes.

**Try a workshop with a guest artist:** Gallery 1871 in Port Broughton not only has curated exhibitions featuring local artists, it runs workshops in different media.

**Join Aboriginal artist Sonya Rankine in a basket-weaving workshop:** Sonya's Lakun Mara ('Weaving Hand') workshops are connected with traditional Ngarrindjeri and Ngadjuri practices. She's happy to host in-house workshops at your accommodation.

**Get to grips with clay:** Meg Honner holds pottery workshops in a stunning re-purposed shearing shed at Forgotten Paddock in Yorketown.

## Not something you see every day...

There are museums and displays up and down the peninsula dedicated to life on Yorke. Don't underestimate these small repositories of history and culture – they harbour extraordinary stories and little-known treasures.

**Moonta Mines:** The rich copper deposit beneath Moonta Mines helped bankroll South Australia and brought Cornish culture to the other side of the world. Board the famous Tourist Railway to see the dramatic mine site and hear tales of life, loss and the remarkable legacy of Moonta. (Know why a Cornish pasty has a thick crust on the top? Prepare to be amazed!) Part of the broader Australian Cornish Mining sites, the mines were added to Australia's UNESCO World Heritage Tentative list in 2024.



Lakun Mara, Wallaroo/Wadla Waru

Scan the QR code to learn more about Yorke Peninsula's Art Trail.



**George the Giant Squid:** The Wallaroo Heritage and Nautical Museum was originally a post office but now features a lively display relating to how life was on the peninsula. George the Giant Squid was taken from the stomach of a whale 50 years ago and is now preserved in formalin. His body is 1.5 metres long and his tentacles measure 8.5 metres. The former 1877 Tipara Reef Lighthouse can be seen in Investigator Park in front of the museum.

**An original stump jump plough:** The Heritage Museum is in the former powerhouse building of the Clarence H Smith factory – the factory that made the stump jump plough in 1880. Quite literally a ground breaker, the plough revolutionised the task of clearing scrub, opening up much of Australia's mallee country for agriculture. The Farm Shed Museum in Kadina has video of the stump jump plough in

action – as well as a terrific collection of historic farm vehicles. And don't miss the two-day Price Tractor Pull, a dead-set Peninsula legend!

**The Finnish skippers who raced across the world:** The little museum at the beginning of Port Victoria jetty houses a big story – how the mighty four-masted windjammers raced each other from England to be first to collect the grain from Yorke Peninsula. Look for the fabulous photo of Finnish skippers in the 1920s standing outside the Port Vic pub – then maybe go for a beer yourself.

**The coronation of the Butterfish King:** Gynburra Festival in Port Victoria (usually end of January) is a free event that celebrates Nharangga fishing culture and identity, with a slew of events including fireworks, food and performances. Most importantly, it hosts the traditional 'Butterfish Competition' which sees

locals vying to spear the biggest butterfish and earn the title of 'Butterfish King'!

**The wreck of the Ethel:** The bones of this iron barque have rested on Ethel Beach since 1904. It's in a stunning part of Dhillba Guuranda-Innes National Park and both the beach and wreck are easily accessed by wooden steps. It's fun to wander around the heritage site and makes for awesome photos at sunset.

**Harry Butler's 'Red Devil':** Captain Harry Butler evolved the concept of airmail on the frontlines during the First World War, dropping messages from his plane and then, in 1917, flying the world's first airmail from Glasgow to Turnberry. His Bristol M1 – the only surviving example in the world – is on display in Minlaton. Butler used it to fly mail from Adelaide to Minlaton, the first over-water flight in the Southern Hemisphere.



## Aboriginal Cultural Tours SA

### Award-winning Ngadjuri Outbush and Adjahdura Narungga Coastal Tours

- From coast to outbush and giants in ancient lands, come walk in the footsteps of our ancestors.
- Yorke Peninsula, Clare, Barossa, Burra, Mid North and Southern Flinders Ranges.
- 20 SATC and two Hall of Fame awards.
- Three National Accreditations.

Mob: 0429 367 121  
Email: quenten.agius@aboriginalculturaltourssa.com  
www.aboriginalculturaltourssa.com



## Wallaroo Silo Light Show

Nightly Show on the Wallaroo Silos After Sunset, celebrating our unique history, events and local artists. Shows will be seasonal, with a new theme for each one. Best viewing from Jetty Road.

Tune into 88.3FM for audio.  
Show times can be found at:  
www.visitcoppercoast.com.au/wallaroosilolightshow



## Price Tractor Pull

### Take on the Challenger for a Full Pull

Two-day event at Price Town Oval | Family-fun weekend

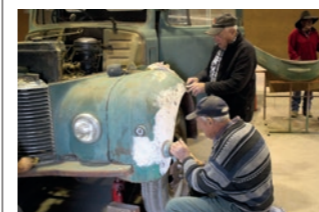
- Music | Market stalls | Show N Shine
- Face painting | Food vans | Bar
- Wool spinning | Horse cart rides
- Steam traction engine
- Kids activities

2-3 August, 2025

Price Oval, Parnell Terrace, Price  
www.pricetractorpull.com.au



50 Mines Road, Kadina  
PH 08 8821 2333  
visit@coppercoast.sa.gov.au



## The Farm Shed Heritage Museum

Explore the lives of those living in the 1900s through their homes, farms, town and mines  
Guided Group and School Tours available

Open Monday-Friday 9am-5pm  
Saturday, Sunday and Public Holidays 10am-4pm



# STAY

WHETHER YOU WANT TO GLAMP,  
CAMP OR LUXE IT UP, YORKE PENINSULA  
HAS EVERY BASE COVERED



Love and Mutiny, Chinaman Wells



Yondah Beach House, Point Yorke/Gadjarawi



Wallaroo Marina Apartments, Wallaroo/Wadla Waru



Hillocks Drive, Marion Bay/Gaggadawi

## On-trend, up-market and out there!

In the last few years, the region has become known for accommodation options that offer wild alternatives...

**Klein Pod, Stansbury:** This custom-designed luxury pod accommodation is on a secluded property with views of Stansbury's Oyster Bay. Check out the gorgeous outdoor shower surrounded by corrugated iron, the day bed that's perfect for stargazing and the cosy combustion heater.

**Love and Mutiny, Chinaman Wells:** Be dazzled by this hot pink beachfront shack! It screams salty chic and enjoys awesome beach frontage from a festoon-lit balcony. The shack includes a fully-equipped kitchen, pink seaside bathroom, vintage glassware, Society of Wanderers bedlinen and original artwork.

**My Sister and the Sea, Marion Bay:** This weatherboard cottage is intimate, relaxed and effortlessly chic. Offering two queen-sized bedrooms (and plenty of beach-y vintage) it has captured hearts and minds at *Country Style*, *Herald Sun* and *Vogue*.

**Bayside Glamping, Marion Bay:** Two options, both lovely: there's a luxury bell tent in a secluded corner just off the beach at Marion Bay, kitted out with a pillow-top queen bed, bottle of bubbles, MOR amenities and fairy lights; and a newly built tiny house, fully off-

grid, positioned on natural grass land with views from every window.

**Yondah Beach House and new Seafire, Point Yorke:** Yondah Beach House is a luxury home-from-home on a cliff with a secluded beach. This year-on-year tourism award winner has three rooms and sits on 300 acres. It now has a new sister property called Seafire, an architect-designed retreat for four guests tucked away in the dunes. Seafire and Yondah offer the ultimate five-star luxury on the peninsula.

**Redwing Farm, Weetulta:** Award-winning Redwing Farm has a range of deluxe, character-filled accommodation options, surrounded by a gorgeous working farm with plenty of animals to love. Redwing Shearer's Quarters is a beautiful, historic two-bedroom cottage; Redwing Barn is a renovated rustic barn designed for families; and Redwing's Little Patty is a 1956 caravan for those wanting an escape and a dose of cute!

**Hillocks Ocean Pods, Butlers Beach:** These striking pods sit atop elevated bushland looking down onto wild waters. Enjoy the birdlife, watch for whales and feel suitably cast away. The two pods have all mod-cons and sleep up to four.

## Caravans, camping and holiday rentals

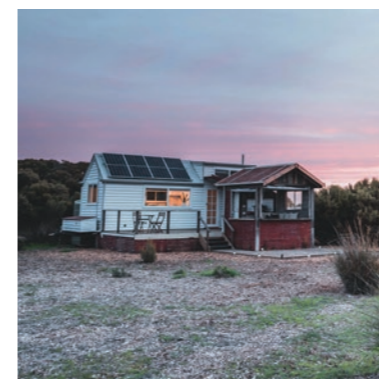
For decades, caravanners have been coming to Yorke Peninsula, drawn to caravan parks

that enjoy absolute beachfront position, relaxed ambience and (more often than not!) plenty of fish-cleaning stations. These days, parks are increasingly well-equipped with facilities. Don't be surprised to find fully-equipped camp kitchens, fire pits, playground facilities, swimming pools, splash parks, bike tracks and equipment for hire.

No van? No problem. Parks have everything from standard and family cabins to luxury pods and villas. Campers and RVs can take advantage of overnight stay areas for a small fee; contact a Visitor Information Provider for more information on RV-friendly towns, dump points and overnighting options.

**Dhilba Guuranda-Innes National Park** offers campsites and heritage accommodation, surrounded by native wildlife. (Please note, camping sites and self-contained accommodation within Inneston historic village must be booked in advance online. Campers should check out YP Council's new bush camping site ([yorke.sa.gov.au/discover/things-to-do/bush-camping/](http://yorke.sa.gov.au/discover/things-to-do/bush-camping/)). The streamlined, book-in-advance system ensures you've got your site secured before you arrive!

For holiday rentals, check out **Country Getaways Holiday Rentals** or **Accommodation on Yorke** for options to suit all groups and budgets. Travelling in a large group? **CU@Wallaroo** and **Arura Group Stays** at Port Hughes have you covered.



Bayside Glamping, Marion Bay/Gaggadawi



My Sister & The Sea, Marion Bay/Gaggadawi



Post Office Lodge, Dhilba Guuranda-Innes National Park



# Bush Camping

Calling



MESSAGE

## Yorke Peninsula Council

- Nineteen spectacular locations to choose from
- Convenient NEW booking system
- Stress-free genuine bush camping experience



BOOK  
HERE



Agriculturally rich - Naturally beautiful

[yorke.sa.gov.au/bush-camping-permit](http://yorke.sa.gov.au/bush-camping-permit)



Redwing Farm, Weetulta/Widalda

Cabins, motels and apartments are available across the region. Try the **Stansbury Holiday Motel** (with amazing ocean views), **Edithburgh Seaside Motel** (14 units all with undercover parking), **The Seagate Motel** in Moonta (absolute beachfront and fully renovated), the **Sunnyside Motel** in Port Broughton (with seasonal outdoor pool), **Karen's Cabins & Apartments** in Port Vincent (think open-plan living and balconies), **Port Vincent Motel and Apartments** (on the Main Street close to the shops), **Minlaton Hotel** (pub accommodation in the heart of town), **Coastal Horizons on Black Point** (family retreat on the beach) and **Bev's Retreat** (a B'n'B in Wallaroo).

### Farmstays

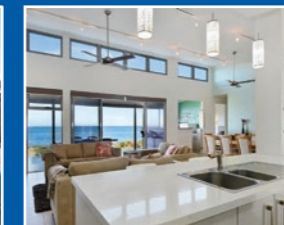
Yorke Peninsula has farm stays offering accommodation that can be enjoyed by the whole family. Relax on a working farm with plenty of space and opportunities for kids to meet and feed the animals; the owners love to give people a taste of life on the farm and are a terrific source of stories and knowledge relating to the peninsula. Try **Redwing Farm** in Weetulta, **Tarnasey Farm** near Wallaroo (well-known for its Little Farmer Tours) and **Peg's Place Farm Stay** near Port Victoria.

# Country Getaways

HOLIDAY RENTALS

## Getaways to Yorke Peninsula

(08) 8832 2623



- ✓ Local and professional with over 20 years experience
- ✓ Value for money accommodation all over Yorke
- ✓ State and regional award-winning business
- ✓ Representing over 200 rental properties
- ✓ Professional cleans after every tenancy
- ✓ Easy booking process
- ✓ User friendly website
- ✓ Long stay discount
- ✓ Local knowledge
- ✓ Budget to deluxe



[www.countrygetaways.com.au](http://www.countrygetaways.com.au)



## ARDROSSAN caravan park

scan to find out more



Less than two hours from Adelaide, the town of Ardrossan is the perfect location to base yourself and explore all that the beautiful Yorke Peninsula has to offer. Get in touch now to book your Ardrossan getaway.



### CABINS - POWERED SITES - UNPOWERED SITES

- Free wi-fi
- Pet friendly options
- Close to main street & jetty
- Communal fire pit (seasonal)
- Fish cleaning & crab cooking facilities



1 PARK TERRACE, ARDROSSAN PHONE 08 8837 3262 OR EMAIL [OFFICE@ARDROSSANCARAVANPARK.COM.AU](mailto:OFFICE@ARDROSSANCARAVANPARK.COM.AU)



**BIG4**  
HOLIDAY PARKS

(08) 8825 2106    big4porthughes.com.au

Explore BIG4 Port Hughes.



**Port Vincent**  
**CARAVAN PARK & SEASIDE CABINS**

- ▶ Beachfront location ▶ Spa, deluxe, standard and economy cabins
- ▶ Four-bedroom villa sleeps 12 people ▶ Two dormitory rooms
- ▶ Powered and unpowered sites ▶ Pet-friendly sites all year
- ▶ Pet-friendly cabins available by arrangement
- ▶ Camp kitchen with free barbecues
- ▶ Excellent, safe beach for children, perfect for crabbing and fishing
- ▶ Fish cleaning facilities ▶ Ice and gas available
- ▶ Putt putt golf and coin-opp games room (open to the public, phone for opening hours) ▶ Eight minute walk to the town's shopping centre and hotel

12 Minlacowie Road, Port Vincent  
Ph: (08) 8853 7011  
Email: stay@portvincentcaravanpark.com.au  
www.portvincentcaravanpark.com.au

BOOK ONLINE    🐕    📱    📺



**EDITHBURGH CARAVAN PARK**    Great spot to Explore, Fish, Dive, Swim & Relax!

2014 South Australian Tourism Awards SILVER    2013 South Australian Tourism Awards BRONZE

- Overlooking St Vincent Gulf and the highly acclaimed Troubridge Island
- Lush lawned sites, Deluxe Cabins, Seaview Cabins and Ensuite Cabins
- Located adjacent to the beach and boat launching. Short walk to shops, tidal swimming pool and jetties
- Facilities include playground, jumping pillow, basketball area, camp kitchen, free barbecues, modern amenities, fish cleaning shelter
- Disabled and pet-friendly sites and cabins
- Home of the Leafy Sea Dragon

34 O'Halloran Parade, Edithburgh  
Ph: (08) 8852 6056  
Email: bookings@edithburghcaravanpark.com.au  
www.edithburghcaravanpark.com.au

👤    ♿    🐕    📱    📺    📶    📶    **G'DAY PARKS**



**STANSBURY FORESHORE**  
**CARAVAN PARK**

- ★ Luxury, deluxe and budget cabins
- ★ Absolute waterfront sites
- ★ Powered sites
- ★ Pet-friendly sites
- ★ Well appointed camp kitchen
- ★ Walking distance to main street

22A Anzac Parade, Stansbury    08 8852 4171    www.stansburycaravanpark.com.au    stay@stansburycaravanpark.com.au

BOOK ONLINE    🐕    📱    📺    📶    **G'DAY PARKS**



**MINLATON**  
**CARAVAN PARK**

VILLAS • ACCESSIBLE VILLA • CABINS • PET-FRIENDLY CABIN SITES • CAMP KITCHEN AND BARBECUES • LAUNDRY • WI-FI

STAY IN THE CENTRE OF THE YORKE PENINSULA  
Walking distance to the town centre, shops, playground, tourist attractions, Visitor Information Centre and Watsacowie Brewing Co.  
Only 15 minutes to either side of the Peninsula and many fabulous beaches.

08 8853 2435  
www.minlatoncaravanpark.com.au  
1 Bluff Road, Minlaton SA 5575

2023 South Australian Tourism Awards SILVER    **Kui Parks**



AWARD-WINNING • SECLUDED LUXURY • OCEANFRONT ACRES • ICONIC WILDLIFE

**SEAFIRE**  
BEACH HOUSE

Soak in the coastal grandeur of Yorke Peninsula's iconic 5 star premium luxury retreat!  
www.seafire.com.au

South Australia's favourite pet-friendly hideaway has just had a facelift. Book now!  
www.yondah.com.au

**Yondah**  
BEACH HOUSE



### Accommodation on Yorke

If you are looking for a well-deserved holiday or even just a few days away from the hustle and bustle of everyday life you have come to the right place.

With properties all over the Yorke Peninsula, from Port Hughes right through to Marion Bay. Whether you are looking for a beach shack, an executive property, a beachfront holiday house, a holiday unit, a property with

sea views or maybe no views at all – we have a large range of Yorke Peninsula accommodation properties available to choose from.

Yorke Peninsula boasts magnificent, scenic coastline and captivating beaches where you can fish, swim, surf, snorkel, dive, sail or simply laze in the relaxing seaside atmosphere.

accommodation on  
**yorkes**

Scan the QR Code to book Online or call us direct on: **(08) 8852 2000**



**6 Minlaton Road Yorketown**  
**(08) 8852 2000**  
**Email: info@accommodationonyorkes.com.au**  
**www.accommodationonyorkes.com.au**



### Coobowie Caravan Park

Situated in the heart of Coobowie 'The Pelican Port on the Yorke' with a stunning view of the bay and beautiful beach. The Park is close to the business centre of Coobowie, with the Hotel and shops all within walking distance. We have accommodation options to suit all visitors and at very reasonable rates. The perfect place to set up a base and start your discovery tour of the many sights and great fishing spots on offer on the Southern Yorke Peninsula.

**23 Beach Road, Coobowie**  
**Ph: (08) 8852 8132**  
**Email: bookings@coobowiecavanpark.com.au**  
**www.coobowiecavanpark.com**

- Cabins to suit all budgets, some with absolute beach frontage.
- Pet-friendly Park with cabin options available.
- Powered, drive through and unpowered sites.
- Coobowie Retreat, group bookings – sleeps up to 32. Accessible.
- Playground and camp kitchen.

Coobowie Caravan Park – you'll be blown away!!!



### Port Broughton Tourist Park

Situated at the top of beautiful Yorke Peninsula in a spectacular bay setting neighbouring the Mid North, Lower Flinders Ranges, Clare Valley and Copper Coast. • Standard, Premium and Ensuite sites • Variety of cabin options • Camp kitchen • Fish cleaning and crab cooking facilities • Walking distance to town centre and Jetty • Dump Point • Solar heated pool • Jumping pillow • Splash Park • Pump Track • Mini golf • Peddle Kart hire • Wi-Fi

**Barker Street, Port Broughton**  
**Ph: (08) 8635 2188**  
**Email: stay@portbroughtontouristpark.com.au**  
**www.portbroughtontouristpark.com.au**



### Port Vincent Motel and Apartments

A friendly, comfortable base from which to explore Yorke Peninsula. • Motel rooms, one and two-bedroom self-contained apartments • Two minutes' walk to beach, shops and hotel • Large, attractive lawned pergola area • Free Wi-Fi, parking and barbecues • Fish cleaning and crab cooking facilities • Laundry facilities, linen and towels supplied.

**12 Main Street, Port Vincent**  
**Ph: (08) 8853 7411**  
**Email: pvcabins@gmail.com**  
**www.portvincentcabins.com.au**



### Bev's Retreat (B&B)

Relax and unwind in our period 1940s Memorabilia B&B (Circa 1900) Garden Cottage

- Undercover parking
  - Morning/afternoon tea available on arrival with breakfast facilities supplied for your enjoyment
  - Pets most welcome in the fully-enclosed lawned backyard: vaccination certificates required
- Ring Bev to make your booking: 0438 520 670

**12 Scotland Street, Wallaroo**  
**Mob: 0438 520 670**  
**www.bevsretreat.websyte.com.au**



### Coastal Horizons

**Absolute beachfront holiday home**

Situated at Black Point. Fully-equipped modern kitchen, spacious living area with TV, reverse-cycle air-conditioning and separate laundry. Large furnished outdoor entertaining area with barbecue, crab cooking and fish cleaning facilities. Swim, fish, crab, sail, dive, waterski, relax.

**Enquiries and bookings: Helen**  
**Ph: (08) 8838 2250**  
**Mob: 0409 539 515**  
**Email: helenq@activ8.net.au**  
**www.blackpointcoastalhorizons.com.au**



### Stansbury Holiday Motel

**One of the best seaviews on the Yorke Peninsula**

All rooms have ocean views. Rated #1 in Stansbury on booking.com and Expedia. • Self-contained, standard and spa accommodation • Swimming pool • Wi-Fi • Barbecue area • Cooked and continental breakfast • Walking trails • Fish cleaning facilities • Functions and oceanside weddings • RAA charging station onsite

**16 Adelaide Road, Stansbury**  
**Ph: (08) 8852 4455**  
**www.stansburyholidaymotel.com.au**



### Edithburgh Seaside Motel

A central location, right in the heart of town and only one street back from the ocean.

Cafés, hotels, shops and the tidal pool are all within walking distance.

All of our units are on the ground floor with safe, secure and undercover parking, right out the front.

**25-27 Blanche Street, Edithburgh**  
**Ph: (08) 8852 6172**  
**Email: motel@edithburgh.com**  
**www.edithburgh.com**



### Karen's Cabins and Apartments Port Vincent

**The Ultimate Seachange Location**

Four luxury, two storey apartments and two clean and comfortable self-contained cabins.

Just 50 metres from the main beach, shops and dining.

**Contact: Karen**  
**Cameron Street, Port Vincent**  
**Mob: 0407 795 733**  
**Email: karenscabins@gmail.com**  
**www.karenscabins.com.au**



Apartments have private balconies, great sea views, two bedrooms/two bathrooms, full kitchen facilities, secure garage, TVs in lounge and all bedrooms.

All units have reverse-cycle air-conditioning, access to lawned barbecue area, laundry and fish cleaning facilities.

All linen is supplied.

One night stays available.



### Pine Point Caravan Park & Kiosk

Pine Point Caravan Park & Kiosk is centred around the old school. A family-owned and run business, the park is within walking distance to the beach, which is great for swimming/crabbing/fishing, and walking distance to the wharf for squidding/fishing.

There are 24 sites in total, consisting of six powered sites and four on-site caravans available for hire.

**46-48 Main Coast Road, Pine Point**  
**Ph: (08) 8838 2239**  
**Email: pinepointcpk@bigpond.com**  
**www.pinepointcpk.com.au**



Grassed area with fire pit (seasonal) along with barbecue area with pot belly, sink, fridge and microwave and the shack area is for all your crab cooking and fish cleaning.

The old classroom has been converted into the park office and local convenience store with take away hot food, ice-creams, cold drinks, groceries, liquor, tobacco, bait and tackle, ice and Swap 'n' Go LPG.

# Wallaroo

HOLIDAY PARK



- Beachfront units/villas
- Pet friendly (on sites only)
- NEW Camp kitchen/games room
- Free Wi-Fi
- Kiosk, barbecue area
- Playground
- Bouncy pillow
- Safe and sandy swim beach
- Air-conditioned recreation room
- Disabled facilities
- Hire equipment – go karts, kayaks, stand up paddleboards
- Updated amenities

## Pamir Court, Wallaroo

Email: stay@wallarooholidaypark.com.au  
www.wallarooholidaypark.com.au



# MARION BAY

## CARAVAN PARK



- ◇ Seaside location
- ◇ Swimming beach
- ◇ Great fishing
- ◇ Gateway to Dhilba Guranda-Innes National Park
- ◇ Luxury and budget cabins
- ◇ Playground with jumping pillow



(08) 8854 4094    [www.marionbaycp.com.au](http://www.marionbaycp.com.au)    [marionbaycp@yorke.sa.gov.au](mailto:marionbaycp@yorke.sa.gov.au)

# PORT RICKABY

## CARAVAN PARK



- ◇ Absolute beach frontage
- ◇ Grassed powered sites
- ◇ Fully stocked kiosk
- ◇ Take away food and great coffee
- ◇ Fully self contained cabins
- ◇ Pet friendly (sites only)



(08) 8853 1177    [www.portrickabycp.com.au](http://www.portrickabycp.com.au)    [portrickabycp@yorke.sa.gov.au](mailto:portrickabycp@yorke.sa.gov.au)

# BLACK POINT

## CARAVAN PARK



- ◇ Absolute sea frontage
- ◇ Adjacent to the boat ramp
- ◇ Big rig sites
- ◇ Pet friendly
- ◇ Sheltered BBQ area
- ◇ Showers and laundry



(08) 8838 2239    [www.blackpointcp.com.au](http://www.blackpointcp.com.au)    [blackpointcp@yorke.sa.gov.au](mailto:blackpointcp@yorke.sa.gov.au)

# YORKETOWN

## CARAVAN PARK



- ◇ Boutique park
- ◇ Spacious sites
- ◇ Pet friendly
- ◇ Camp kitchen
- ◇ Lush gardens
- ◇ Ideal base for Salt Lakes Trail and Water Tower Art Trail



0499 213 605    [www.yorketowncp.com.au](http://www.yorketowncp.com.au)    [yorketowncp@yorke.sa.gov.au](mailto:yorketowncp@yorke.sa.gov.au)

# POINT TURTON

## CARAVAN PARK



- ◇ Absolute waterfront
- ◇ Luxury accommodation
- ◇ Big rig sites
- ◇ Grassed powered sites
- ◇ Pet friendly sites
- ◇ Walking distance to the Point Turton Tavern



(08) 8854 5222    [www.pointturtoncp.com.au](http://www.pointturtoncp.com.au)    [pointturtoncp@yorke.sa.gov.au](mailto:pointturtoncp@yorke.sa.gov.au)

# PORT VINCENT

## FORESHORE CARAVAN PARK



- ◇ Total beach frontage
- ◇ Foreshore cabins
- ◇ Glamping shacks
- ◇ Accessible luxury villa
- ◇ Large lawn sites
- ◇ Walking distance to shops and cafes



(08) 8853 7073    [www.portvincentfcp.com.au](http://www.portvincentfcp.com.au)    [portvincentfcp@yorke.sa.gov.au](mailto:portvincentfcp@yorke.sa.gov.au)

# EVENTS

JOIN THE LOCALS AT PLAY AND IMMERSE YOURSELF IN THE YORKE PENINSULA LIFESTYLE

There's always something happening on Yorke! Check here for events, dates and more details.



## Summer

- Live music
- Food + wine events
- Gynburra Festival, Port Victoria

- Christmas markets and New Year's Eve fireworks throughout the region

## Autumn

- Kernewek Lowender, Kadina, Moonta and Wallaroo
- Moonta Show 'n' Shine
- Feast on Foreshore, Port Broughton
- Seafood on Spencer, Port Broughton
- Yorke Peninsula's Saltwater Classic, Stansbury and Port Vincent

- FLAME Festival, Kadina, Moonta and Wallaroo
- Port Broughton Classic & Vintage Show & Shine
- Port Broughton Seaside Markets
- Maitland Show
- Nharangga Minlagawi Cultural Day

## Winter

- Kadina Show 'n' Shine
- Copper Coast Show, Kadina
- Wild Winter Harvest, South Kilkerran

- South Australian Living Artist Festival
- GROUNDUP YP Art Festival
- YP Classic & Vintage Tractor Pull, Price

## Spring

- Copper Coast Cup, Kadina, Moonta and Wallaroo
- Copper Coast Motorsports Show 'n' Shine + 500 Sprints, Kadina
- Rubber Duck Race, Port Broughton

- Mulberry Festival, Warooka
- Minlagawi Nature Festival
- Yorke Peninsula Field Days, Paskeville



Seafood on Spencer, Port Broughton



**Copper Coast Flame Festival**

**SAVE THE DATE.**

**NEXT FESTIVAL**

**MAY 2026**

*A three-day event showcasing Food, Light, Art, Music, Entertainment throughout the Copper Coast.*

Event and Program Details Available at [www.visitcoppercoast.com.au](http://www.visitcoppercoast.com.au)



**KERNEWEK LOWENDER COPPER COAST CORNISH FESTIVAL**

**12<sup>TH</sup>-18<sup>TH</sup> MAY 2025**

**DON'T MISS THE KERNEWEK LOWENDER HELD IN KADINA MOONTA AND WALLAROO**

Celebrate our Cornish heritage, concerts, street parties, food and wine, entertainment, Cornish Pasty bake-off, Maypole and Furry Dancing, fun for all ages

For all the details visit [www.kernewek.org](http://www.kernewek.org)  
 Ph (08) 88214500 email [kernewek@coppercoast.sa.gov.au](mailto:kernewek@coppercoast.sa.gov.au)  
 Find us on Facebook @kernewekcc 50 Mines Road, Kadina










- Major Road - Sealed
- Secondary Road - Sealed
- Secondary Road - Unsealed
- Other Road - Sealed
- Other Road - Unsealed
- 4.W.D. Only
- Distances in Kilometres
- Walk The Yorke Trail
- Rail Trail - Copper Coast (Shared Path)
- Visitor Information Centre
- Information Outlet
- Aboriginal Cultural Experience
- Airport; Airfield
- Boat Ramp
- Brewery; Distillery
- Camping Area
- Caravan Park
- Cellar Door
- Dive Spot
- Golf Course
- Lighthouse
- Marina
- Museum
- Photo Opportunity
- Seal Colony

### YORKE PENINSULA





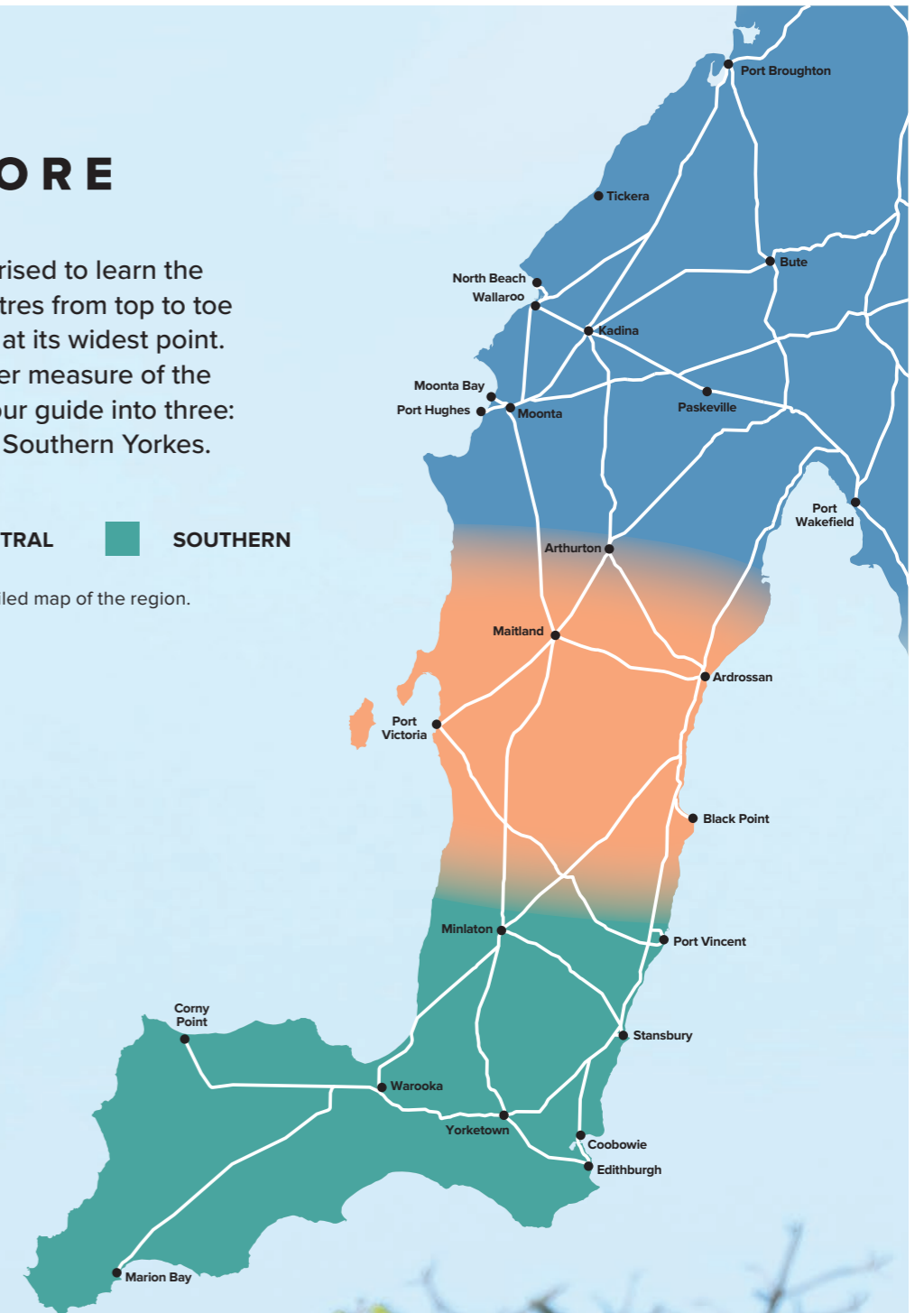
## EXPLORE

Most people are surprised to learn the peninsula is 200 kilometres from top to toe and only 40 kilometres at its widest point.

To help you get a better measure of the region, we've divided your guide into three: Northern, Central and Southern Yorke.

■ NORTHERN ■ CENTRAL ■ SOUTHERN

See page 40 for a more detailed map of the region.



Scan the QR code to explore more of Yorke Peninsula's hidden gems.



## NORTHERN YORKE PENINSULA



### ALFORD/BILA WILA

A small inland town surrounded by farming land, Alford is a great stopover to explore the top of the peninsula and offers camping and caravanning facilities at the Alford RV Park. A highlight for travellers driving through Alford is Karimi's Kitchen, with a takeaway menu of food and drinks – a true hidden gem!

### BUTE

Bute is one of those towns that puts a natural break in your journey. Discover the beautiful murals throughout Bute, including the stunning large-scale mural on the town's silo created by artists Scott Nagy & KrimsOne. The colourful artwork represents women in country areas, local orchids in flower, and birdlife including a rainbow bee-eater and blue wren. Look out also for the shady Railway Reserve, a great spot for a barbecue or picnic.

### KADINA/GARDINA

Kadina is the largest town on Yorke Peninsula and the unofficial capital of 'Australia's Little Cornwall'. Today it's home to around 4500 people but during its mining heyday in the late 19th century Kadina had a population of 20,000. Kernewek Lowender, the biennial Cornish Festival, is held in Moonta, Wallaroo and Kadina. The next event is 2025.

Families like to head to Victoria Square Park with its large shady trees and radical Treetops Playground. Kadina is also home to an indoor play centre, miniature train and putt-putt course at the Visitor Centre. If you're with older children, you can hire bikes to explore Kadina's historic township and walking trails. There's an 18-hole golf course with clubhouse and a range of cafés, restaurants and hotels. The streets of Kadina are also home to some amazing street art, including the fairy door trail.

### MOONTA/MUNDA

A recent 'Top Tourism Town' winner, Moonta's origins in 1860 were based

in copper mining. The flood of skilled miners from Cornwall changed the state's cultural mix and, as a celebration of Cornish heritage, Moonta takes part in the biennial Kernewek Lowender festival along with Kadina and Wallaroo.

The town's beautiful historic buildings include the Moonta Mines Museum, built around 1878. It's the place to board the tourist train which takes you around the heritage mine site. You can also hire a bike from Copper Trails Bike Hire to explore on two wheels. Enjoy a stroll along the main street where you'll find a variety of antiques and giftware shops, great dining options at hotels and cafés, and some amazing street art.

### MOONTA BAY

The sandy coves, stunning beaches, jetty and clear blue waters make for an idyllic panorama at Moonta Bay. It's one of the best places on the peninsula to watch the sun set from the beach. The L-shaped Moonta Bay Jetty is something of an icon and a popular photographic spot. Stretch your legs or cycle the local section of Walk The Yorke trail towards Port Hughes. The popular Splash Town Water Park provides free water fun for the family during the warmer months. Stay in one of the many beachfront accommodation options, including a caravan park, motels and a variety of self-contained holiday homes.

### PASKEVILLE

The Yorke Peninsula Field Days event, held in Paskeville, is one of the oldest of its kind in Australia. Hosted every two years, it showcases over 700 exhibitors of technology, machinery, tools and other agricultural items. The next event is September 30–October 2, 2025.

### PORT BROUGHTON

A winner of the Tiny Tourism Town category in South Australia's Top Tourism Town Awards, Port Broughton is a starting point for a range of holiday adventures. The new Civic Square

has an interactive splash pad water feature (open 7am to 10pm during summer) and Nharangga totem pole art. The seafront precinct is where you can view pelicans, dolphins and magnificent Spencer Gulf sunsets. Head out with a local fishing charter or try your luck fishing off the historic jetty. The tourist park provides the ultimate kids' haven with waterslides, pool, putt-putt and pump track. Don't miss some of the events on Port Broughton's annual event calendar including Seafood on Spencer and Feast on the Foreshore. The delightful Port Broughton South Beach Trail features a coastal demonstration garden and native species display.

### PORT HUGHES

With its pristine beaches, calm clear waters and fantastic jetty, Port Hughes is well-known as a fishing hotspot. Located just minutes from Moonta, Wallaroo and Kadina, Port Hughes is the site of the 18-hole Dunes golf course (designed by Greg Norman) and the popular Port Hughes Tourist Park. For a bite to eat, try the General Store and Tavern on the foreshore. Locals and visitors love to head to stunning South Beach, with its kilometres of white sands.

### PORT WAKEFIELD

Port Wakefield is many things – roadhouse strip, colourful pioneer town and port, and a mangrove swamp loved by bird watchers! Travelling South Australians visit Port Wakefield more often than any other town; it's certainly the perfect spot to break the journey to Yorke Peninsula. Stop for a feed at the family-friendly Rising Sun Hotel and let the kids burn some energy in the hotel's playground.

### TICKERA

Located 38 kilometres south of Port Broughton and 20 kilometres north of Wallaroo, Tickera is a small town

#### THREE-FOR-ONE DEAL

An exciting microbrewery, distillery and restaurant, the **Bond Store Wallaroo** is all about sharing good times. Sample the local beers, taste the gin and delight in the signature 'Parrilla' grill.

See advertisement page 23

#### STAY AND PLAY

**BIG4 Port Hughes Holiday Park** offers beachfront campgrounds, spacious powered and unpowered caravan sites, and modern cabins for a perfect getaway.

See advertisement page 32

#### TAKE THE FERRY

Let **Spencer Gulf Searoad** shorten the journey to Eyre Peninsula and afford you some extra family time. Stretch your legs on the crossing and enjoy onboard snacks and beverages.

See advertisement page 57



## Retirement

Village community in Port Broughton

## Community

Support in your own home

## Residential

Specialising in dementia care



Call 08 8635 0500

Scan the QR code to visit our website

Plus you can relax with lunch and a coffee at **Gloria's Coffee Shop** in Port Broughton.

on the western coastline of Yorke Peninsula. Overlooking Spencer Gulf, it's referred to as 'The Crab Capital of the Spencer Gulf' with many fishermen netting and raking for blue swimmer crabs between September and April. The Tickera Well Trail connects three walking trails that share information about Nharangga people and European settlement.

### WALLAROO/WADLA WARU

A deep-sea port and home to the Spencer Gulf prawn fleet, Wallaroo is a popular holiday town and recently named a 'Top Tourism Town'.

Visit the Wallaroo Heritage and Nautical Museum to relive the town's mining history when metals were mined, smelted and delivered to the world. Watch the Wallaroo Silo light show after sunset each night, which is accompanied by a dedicated streamed audio.

Sealife thrives under the town jetty making it a popular spot for anglers and divers. Cast your line from the jetty or head out in a boat; seafood is fresh and plentiful in the variety of restaurants and cafés; Bond Store Wallaroo offers a gin distillery, brewery and restaurant under one roof.

There's a range of accommodation, including beachfront caravan parks, holiday homes and apartments with marina views, particularly along the spectacular stretch of North Beach.

Scan the QR code for more information.



Port Broughton



## Great food, great service and family friendly

MEALS 7 DAYS, LUNCH AND DINNER | TAKE-AWAY BOTTLE SHOP | GAMING, TAB AND ATM FACILITIES

Conference room facilities and catering - Beer garden with open fireplace, playground, outdoor bar and games room  
Bed and Breakfast Accommodation (no minimum nights stay, single or group bookings) - Dog friendly venue (conditions apply)

OPEN MONDAY-SATURDAY 10AM-LATE AND SUNDAY 11AM-LATE



30 Edward Street, Port Wakefield | T: 08 8867 1023 | [hotelrisingsun.com.au](http://hotelrisingsun.com.au)



Regional seasonal local produce  
Open 8 – 4PM | 7 days | Local menu



56b George Street, Moonta  
M 0490 803 970 | E [info@tastetheyorke.com.au](mailto:info@tastetheyorke.com.au)  
[www.tastetheyorke.com.au](http://www.tastetheyorke.com.au)



www.moontaheritage.com.au



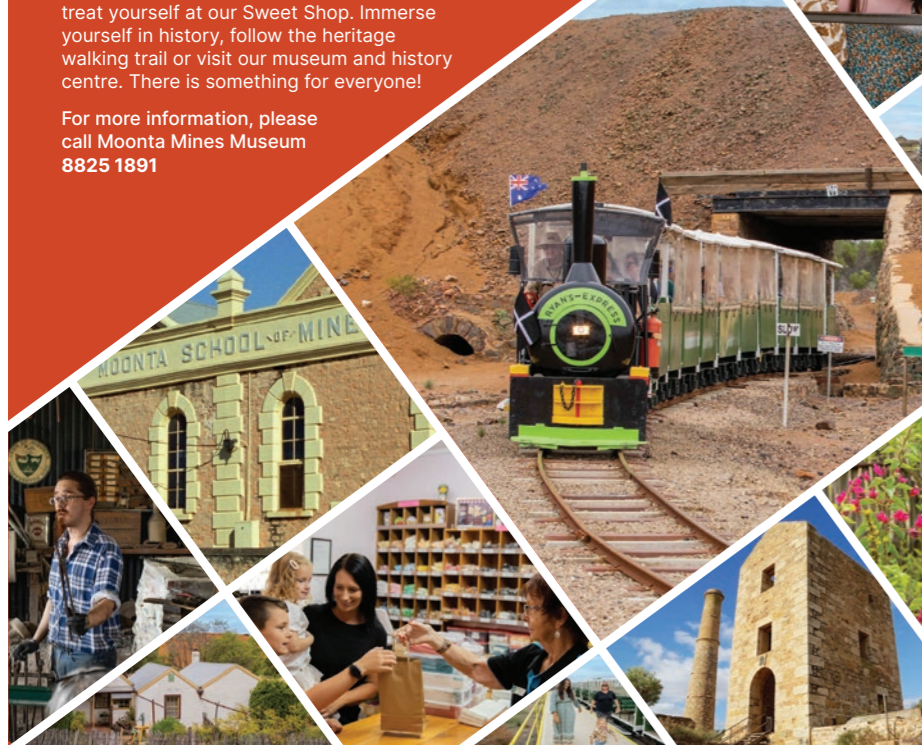
# Experience Moonta Mines

Put yourself in the picture and enjoy great days out.

There is a wide range of things to do in the area.

Visit the old railway, ride the train and treat yourself at our Sweet Shop. Immerse yourself in history, follow the heritage walking trail or visit our museum and history centre. There is something for everyone!

For more information, please call Moonta Mines Museum 8825 1891



### Bute Caravan Park

Located in the quiet town of Bute, this well-kept, grassy caravan park offers a small number of short-term powered sites suitable for campers, caravans and motorhomes, as well as toilet and shower facilities.

Payment and key collection is arranged through the neighbouring Council office.



15 Railway Terrace, Bute  
Ph: (08) 8826 2011  
Email: [barunga@barungawest.sa.gov.au](mailto:barunga@barungawest.sa.gov.au)



### Copper Coast Indoor Play Centre and Café

The only indoor play centre on Yorke Peninsula

Sit back, relax and enjoy the safe, clean, environment while watching your kids play. Don't forget to wear socks!

No socks – no play. Open daily 10am–4pm.

Closed Good Friday and Christmas Day.

50 Mines Road, Kadina  
Ph: (08) 8821 2333  
Email: [visit@coppercoast.sa.gov.au](mailto:visit@coppercoast.sa.gov.au)  
[www.visitcoppercoast.com.au](http://www.visitcoppercoast.com.au)



## WALLAROO HERITAGE & NAUTICAL MUSEUM

Discover our maritime heritage

- LOCAL HISTORY
- THE DAYS OF SAIL & STEAM
- COPPER SMELTING ERA
- GEORGE THE GIANT SQUID!
- RAILWAYS
- SOUVENIRS
- INFORMATION
- SEE 4 BUILDINGS OF LOCAL HISTORY DISPLAYS
- OUR PAST IS THE PRESENT
- MUCH MORE!



Open daily 10am–4pm  
Jetty Road, Wallaroo

Group bookings welcome  
Ph. (08) 8823 3015  
[www.wallaroomuseum.com.au](http://www.wallaroomuseum.com.au)



Ardrossan Bakery, Ardrossan

## CENTRAL YORKE PENINSULA



## TOWNS

### ARDROSSAN

Ardrossan is home to the delicious blue swimmer crab, a delicacy that can easily be caught and enjoyed in the warmer months using nets from the jetty or by raking the shallows at low tide. Ask a local for crabbing tips or join a crabbing tour for the full catch and cook experience.

Ardrossan Jetty is usually a hive of activity, with anglers casting for tommies, mullet, garfish, crabs and squid. There is a small, protected boat harbour and ramp with pontoon boarding. If you've caught a feed, head to local boutique winery, Emoyeni Wines, on their open days. You're sure to find the perfect accompaniment!

Out at sea, the wreck of the *Zanoni* lies 10 nautical miles from shore (a permit is required to dive this historic wreck) and the man-made Windara Reef is seven kilometres off the coast. The latter was designed to contribute to a healthier marine environment and improved opportunities for recreational fishers.

See a piece of South Australian agricultural history at the National Trust Museum and Information Centre. The stump jump plough made it possible to farm the world's finest barley nearby, and the museum is the site of the original factory of inventor, Clarence Smith.

Stroll along the scenic cliff top trail from Ardrossan to Tiddy Widdy Beach. With great views of Gulf St Vincent and plenty of birdlife, this easy three-kilometre trail is both cycle and wheelchair-friendly and forms part of the Walk the Yorke trail.

Ardrossan offers good shopping facilities and a range of dining outlets. Accommodation options include the Ardrossan Caravan Park, motel rooms and holiday houses, with Parara bush camping just to the south.

### ARTHURTON/GARLGABARI

A small town in the centre of the peninsula, Artherton is surrounded by farmland with some of Australia's richest crop-producing soils. Sunny Hill Distillery is located just to the north of the town, producing award-winning 'crop to drop' vodka, gin and whisky from locally grown grain. The distillery offers tastings, and has regular live music events.

### BLACK POINT/GUDLIWARDI

Black Point is a popular coastal destination for families and holiday makers, offering absolute beachfront accommodation. Options range from basic beach shacks to luxury self-contained holiday homes; there's also a small caravan park overlooking the bay. With no roads in between the front row

and the water, the only thing between you and the ocean is the white sandy beach.

There are several beach access points and a boat ramp. Swimming, fishing, crabbing, sailing and water skiing are popular aquatic activities. Raking for blue swimmer crabs is possible here, too; look for them when the tide is turning, grab your bucket, shoes and crabbing rake and head into the shallows.

Take advantage of the Walk the Yorke trail and meander along the cliff tops. If you're lucky, you might spot Wilfred the Van where you can grab a morning coffee.

### MAITLAND/MAGGIWARDA

Situated overlooking the Yorke Valley, Maitland is geographically the central town on Yorke Peninsula, only a 15-minute drive from both the east and west coasts. Due to higher rainfall than other parts of Yorke Peninsula, Maitland is surrounded by some of the best barley country in Australia.

Maitland has a historic walking trail that winds its way past heritage buildings, the National Trust Museum, and the town's interesting war memorial which lists names of football legends as well as the father of an Australian Prime Minister.

The Maitland Markets are open weekly. They're centrally located and have plenty of room to park the caravan. Look out for the bronze sculpture of a Clydesdale, representing a bygone era when farmers were dependent on their horses.

The town has a great bakery and café for your food and coffee needs. Thirteen kilometres south of Maitland on the Spencer Highway is Barley Stacks Wines. The first commercial winery operation on the peninsula, it's open seven days a week for tastings.

### PINE POINT

This small, peaceful town is seated on a rise overlooking the bay of Port Alfred, enjoying views of Black Point in the distance. It's regarded as an excellent wading area to rake for blue swimmer crabs and a popular spot for fishing and boating.

Located just 165 kilometres from Adelaide, Pine Point is a central location ideal for exploring the peninsula. It's served by a much-loved licensed kiosk which offers takeaway food; there's also a caravan park and holiday houses.

The town was surveyed as 'Muloowurtie' in 1883 and renamed Pine Point in 1940. It was once one of the busiest ports on Yorke Peninsula, visited by ketches which were loaded directly from the drays

before a small wharf was built, enabling ketches to remain in deeper water.

### PORT VICTORIA/DHARLDIWARLDU

Start your visit to Port Victoria at the beautiful (and very long) jetty. At the end of the 19th century the waters were filled with sailing ships of all sizes, their holds bulging with sacks of wheat and barley.

The small Port Victoria Maritime Museum at the start of the jetty showcases the town's history and maritime heritage and is well worth a visit. The Wardang Island Maritime Heritage Trail includes eight shipwrecks located in the nearby waters off Wardang Island – the underwater diving trail is very popular. If you're not a diver, there are also interpretative signs on land.

The Port Victoria Geology Trail extends from south of the jetty for around four kilometres to Rifle Butts Beach and showcases the area's volcanic beginnings. There are also foreshore walking trails.

Port Victoria has a terrific hotel, takeaway, playground, seafood shop and general store. For all other needs, nearby Maitland is just 15 minutes' drive to the north.

The Gynburra Festival, held annually in January, is a fun weekend drawing on Nharangga traditions. It sees plenty of dancing, music and food, as well as the famous butterfish competition.

### GREAT PUB, BIG MENU

The **Ardrossan Hotel Motel** has a bonza bistro serving steak plates, seafood galore and plenty of pasta and pizza. 'The Top Pub' also has a welcoming front bar and 11 refurbished ensuite rooms.

See advertisement page 24

### DISCOVER A FAMILY-OWNED DISTILLERY

Taste the 'crop-to-drop' difference at **Sunny Hill Distillery**. Sit back, relax and enjoy the locally made gin, vodka, whisky, rum and brandy. There's a menu of bookable experiences, too.

See advertisement page 24

Scan the QR code for more information.



Sunny Hill Distillery, Artherton/Garlgabari



### Maitland Bakery & Café

More than a Bakery... Come and visit us at our lovely new venue. Serving up burgers, steak sandwiches, hot chips, milkshakes and so much more! Meet up with friends or family for morning tea or lunch and indulge in one of our sweet treats with a coffee made from our new Hark! coffee beans.

**Monday–Friday 8:30am–4pm**  
**Saturday 9am–2pm**

**47 Robert Street, Maitland**  
**Ph: (08) 8832 2233**  
**sales@yorksbakery.com.au**



### Ardrossan Museum and Information Centre

Come and meet our friendly volunteers who welcome everyone and provide valuable information about the community. Enabling you to make the most of your time, visit the museum and learn about Ardrossan and Yorke Peninsula. We also have a wide range of souvenirs, local honey and handcrafted products for sale.



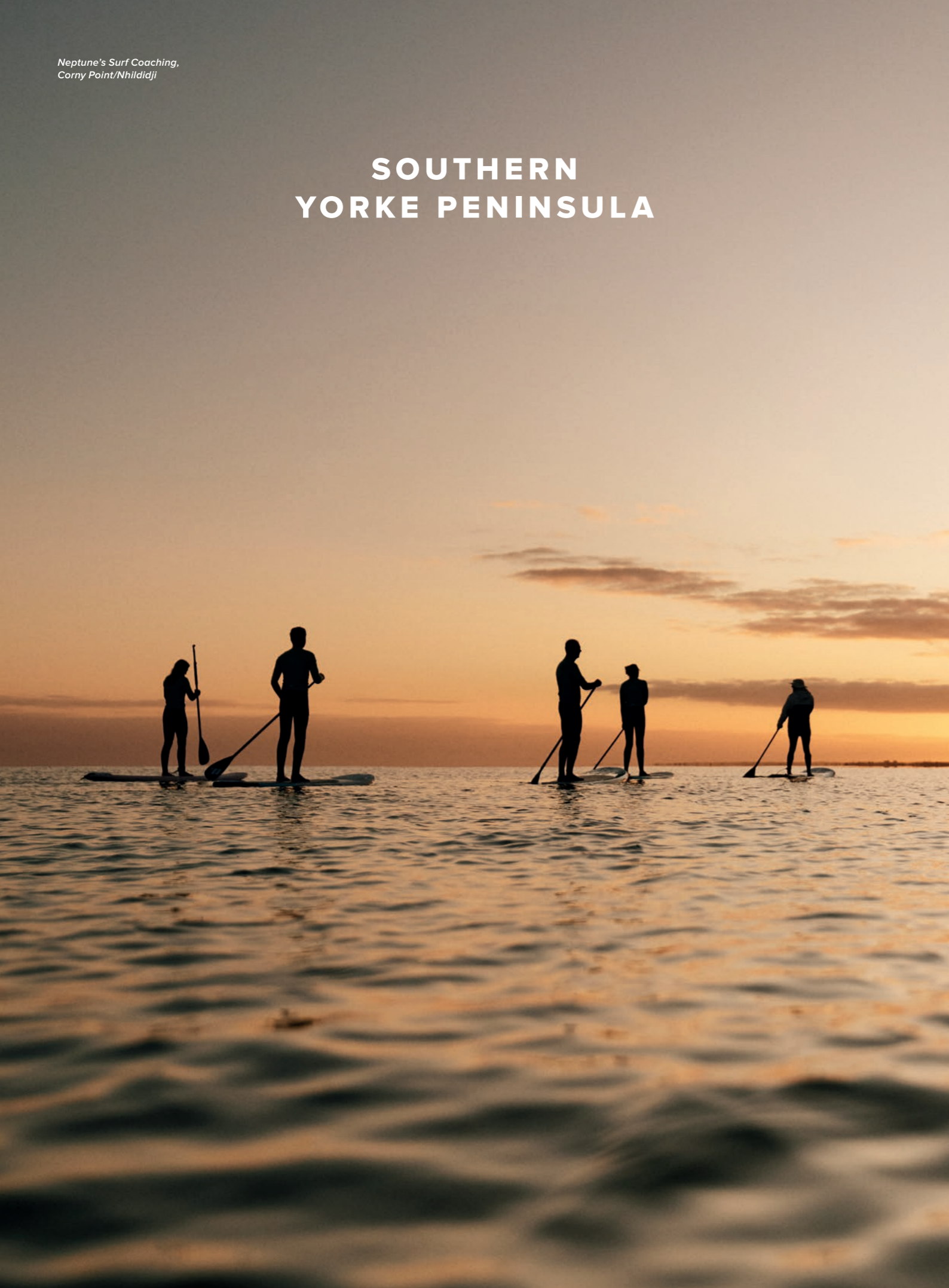
**ARDROSSAN**

Making Ardrossan a better place to live, work and visit.

**14–16 Fifth Street, Ardrossan**  
**Ph: (08) 8837 4195**  
**Email: information@ardrossan.sa.au**  
**www.ardrossan.sa.au**



# SOUTHERN YORKE PENINSULA



## TOWNS

### COOBOWIE/GUUBAWI

Early explorers found Coobowie and the tidal inlet so attractive they started planning a big city here. When fresh water couldn't be found, they felt cheated and named it Deception Bay. Today Coobowie is a popular seaside town with plenty of fishing spots and wide beaches. There's a hotel and playground close to the foreshore and a picturesque five-kilometre coastal walking trail to Edithburgh. Birdwatchers shouldn't miss the Coobowie Bird Hide; brochures are available locally to help identify the array of birdlife.

### CORNY POINT/NHILDIDJI

Matthew Flinders named this area Corny Point because, cartographically, it looked like a corn on the foot of Yorke Peninsula. Corny Point is the gateway to the best surfing spots on the west coast, including Berry Bay and Formby Bay. It's a popular place for boat fishing and there are several north-facing swimming beaches which are great for kids. Grab a bite from the shop or tavern and enjoy the pristine outdoors. The 1881 Corny Point lighthouse is the starting point for many adventures – don't forget to stop and take a picture.

### EDITHBURGH/BARAMARADI

Located in the south-eastern corner of Yorke Peninsula and looking out to Troubridge Island, Edithburgh has always been a popular destination.

Overlooked by the Wattle Point wind farm, the town has hotels, motels, a caravan park, coastal golf course and parklands laid out to the same design as those in Adelaide by Colonel William Light.

There isn't much need for swimming pools near the beach but Edithburgh has one and the tidal saltwater pool is a hit in summer. If you're visiting, it's not to be missed. Fishing can be done from the jetty, boat or beach, and boat launching is made easy with twin boat ramps and floating pontoons.

Known for its spectacular diving and snorkelling, the jetty has a variety of marine life, including leafy seadragons, big-bellied seahorses, Port Jackson sharks, cuttlefish and corals.

At the museum, learn about the large salt industry that once dominated the town and discover the historic *Clan Ranald* and *Marion* shipwrecks that lie just off the coast. There are appealing shops and plenty of meal options. Edithburgh is also a base for a pre-booked trip to Troubridge Island where the lighthouse still operates.

### MARION BAY/GAGGADAWI

Nestled in coastal scrubland, Marion Bay has long been known as a great base for holidaymakers, anglers and surfers looking to explore Dhillba Guuranda-Innes National Park and the foot of the peninsula. There's a sheltered swimming beach, surf beach, boat ramp and an ink-stained jetty that's legendary for its big squid. On the doorstep of some of the best beaches in Australia and enjoying a rich maritime history, Marion Bay is a great place to get back to nature.

The protection from rough ocean conditions sees the area home to fishing and cray-fishing boats which are active over the warmer months. There are few locations on Yorke Peninsula that can match the reputation of Marion Bay for deep-water fishing, and several charters operate in the area. The autumn mullet run is also a drawcard for beach anglers and popular fishing hotspot Butler's Beach is only 16 kilometres to the east. The unique Hillocks Drive camping and accommodation can also be found here.

Marion Bay has a general store for takeaway and grocery needs and the tavern is excellent. You'll find lots of accommodation options from holiday homes and units to a motel and caravan park; or try camping outdoors – there are plenty of campsites to choose from on the coast and in the National Park but check if you need a permit before setting up camp. The Visitor's Centre is at the entrance of the park and a great source of information.

### MINLATON/MINLADAN

Minlaton was settled in the 1870s by farmers who found the conditions ideal for wheat, barley and sheep grazing. Today, Minlaton features a playground, skate park and picnic area, and the main street has a variety of shops including Harvest Corner for local produce, quality crafts and visitor information. Craft brewery, Watsacowie Brewing Company, is the place for a tasty ale, and the Minlaton Caravan Park is located nearby.

Minlagawi Gum Flat Reserve, east of the town is a great spot for a picnic. There's a picturesque walking trail which includes Yorke Peninsula's only red gum stand, Aboriginal wells and a she-oak forest.

The kids will love the fauna park with its inquisitive kangaroos and emus. Nearby is a memorial to Captain Harry Butler, who in 1919 flew his World War I Bristol monoplane *Red Devil* on the first special mail delivery in the Southern Hemisphere, across the sea to Minlaton from Adelaide.

### POINT TURTON

Point Turton overlooks the white sandy beaches of Hardwicke Bay where the peninsula's 'leg' meets its 'foot'. The sheltered waters are perfect for year-round boating, fishing and sailing.

Point Turton offers a stunning Spencer Gulf sunset. There's also a good range of services including a swimming centre, nature playground, General Store and a caravan park overlooking the jetty. The Tavern on Turton has views across the coast and is a popular meeting spot for locals and visitors.

### PORT VINCENT

Port Vincent is a popular holiday destination and an ideal location for fishing, boating, sailing, swimming and snorkelling. The Town Beach is perfect for families and the marina offers an all-tide boat ramp. Kids love swimming out to the pontoon from the main beach and wandering along the wharf to see what the locals catch.

Cliff-top lookouts and walking trails offer stunning views across the bay and you can work up a thirst before heading into the shopping strip. The main street is a great place to browse the shops, stopping for a bite to eat at the café, kiosk, wine bar or hotel whilst taking in the sea views.

Port Vincent offers all types of accommodation including caravan parks, cabins, apartments, holiday homes, a motel, a villa, glamping and more.

#### A PRIMO PUB!

Visit the **Minlaton Hotel Motel** for a friendly front bar, a Thirsty Camel bottle-o – and a family feed at Caffe Primo! Did we mention the refurbished ensuite motel units?

**See advertisement page 24**

#### BEACHFRONT FOR ALL!

Right on beautiful Oyster Bay beach, the **Stansbury Foreshore Caravan Park** offers a range of accommodation including, cabins, luxury villas, waterfront villas and beachfront powered sites!

**See advertisement page 33**



Studio Surf, Marion Bay/Gaggadawi

**SECLUDED LUXURY**

Live the dream at the award-winning and pet-friendly **Yondah Beach House** or the iconic five-star **Seafire Beach House**. Explore 300 oceanfront acres or just bask on a secluded beach of your own!

See advertisement page 33

**A PARK FOR EVERYONE!**

**Coobowie Caravan Park** has accommodation for small families, large families, groups of friends and budget conscious corporate travellers. It also extends a special welcome to your pets!

See advertisement page 34

**STANSBURY**

On the pristine sheltered waters of Oyster Bay, Stansbury attracts swimmers, water-skiers, sailors and windsurfers. It's popular with anglers and provides easy access to deeper water. Attractions include the local museum and the bustling Stansbury Seaside Markets held on the foreshore from October to April. You can also pop into the Visitors Centre for some local knowledge on what to see in the area.

Crabbers know this is the place to go for blue swimmer crabs, which inhabit the shallows in warmer months. Rakes and other crabbing equipment can be purchased in town and you will see people dotting the water hoping to catch a feed.

There's an excellent walking trail where black swans can be seen gracing the town's back beach, and the Mill's Gully picnic spot offers a lookout with gulf views.

There's fresh seafood to purchase in town; local oyster farms supply oysters straight from the sea (when in season), so keep your eye out for the signs. You can also join the local oyster crew by becoming a 'Deckie for a Day'.

**WAROOKA/WIRUGA**

Warooka is a great stop-off when travelling to or from Dhilba Guuranda-Innes National Park. It looks south to the 'bottom end' and north along the coast from Hardwicke Bay around to Point Turton (where you'll find white sandy beaches perfect for swimming and windsurfing).

Buildings in Warooka date from the late 1800s and the Warooka Museum, formerly the police station, houses a comprehensive display of items originating from the surrounding area.

Lower Yorke Seafood has local seafood for sale; it's located only four kilometres west of Warooka.

**WOOL BAY**

Named Wool Bay because it had a cutting in the cliff wide enough to roll a bale of wool down to the beach, this seaside town once served as a port for the district's farms and pastoral runs. These days Wool Bay is a quiet gulf getaway. Enjoy the relaxed and peaceful atmosphere of this small town or try your luck fishing or squidding from the jetty. On the clifftop, you can see the remains of the lime kilns that were once common on this part of the peninsula.

**YORKETOWN/GARRDINYA**

The retail centre for surrounding areas, Yorketown is at the junction of five roads. It's the ideal spot to stock up on groceries thanks to the well-provisioned Yorketown Foodland.

The town is surrounded by some 200 salt lakes, which were once harvested for their salt. Today, the salt crystal formations and pink lakes are a drawcard for photographers. Follow the complete circuit of the Salt Lake Trail, starting and finishing in Yorketown. This driving route takes you past some of the best and most accessible salt lakes on Southern Yorke Peninsula. Interpretative signage highlighting the history of salt production in the area can be found at stops along the trail at Lake Fowler, Dhaliwanggu (Lake Sunday) and Pink Lake.

Yorketown's old courthouse holds over 1000 photographs and there is a town walk for visitors. Yorketown is a good spot to stop for something to eat. It's home to a supermarket, liquor stores, fuel, and good shopping. The town's caravan park, located near the oval, offers accommodation.

Scan the QR code for more information.



**Edithburgh Post Office and Gift Shop**

Situated in a beautiful, historic, seaside town, visit the Edithburgh Post Office and Gift Shop for all your Australia Post needs, including banking, gift cards, BillPay and phone recharges. We stock a great range of stationary and quirky, unusual gifts to suit everybody as well as the trusted Australia Post brands. Open Monday to Friday 9am-5pm and Saturday 9am-12pm.

18 Edith St, Edithburgh  
Ph: (08) 8852 6295  
Email: seacorner@bigpond.com

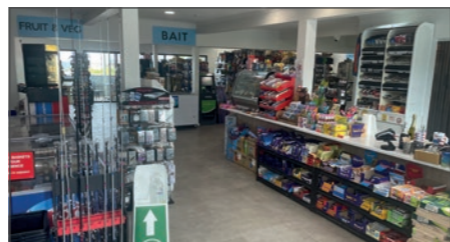


**Hillocks Drive (Butler's Beach)**

**Bush Camping/Rock Pools**  
Natural bush camping area adjacent to five kilometres of scenic coastline. Excellent fishing, hiking and photography. Hillocks Ocean Pod and Homestead rental available.

- Pristine rock pools.
- Ideal snorkelling. Skim boarding haven.
- Part of 'Walk the Yorke' walking trail.
- Unpowered camping. Day visit. Water.
- Toilets/hot showers. Barbecue. Shop.

Ph: (08) 8854 4002 Mob: 0488 544 040  
Email: info@hillocksdrive.com  
www.hillocksdrive.com



**Marion Bay General Store**

Come and visit our friendly staff for a well-stocked variety of necessary supplies since 1968. Café with great coffee, rolls, hotdogs, chips and take away. Groceries • Ice • Bait and Tackle • 24/7 Fuel • Laundry Take away food and coffee. Service with a smile!  
Monday-Thursday 7:30am-5pm,  
Friday and Saturday 7:30am-6pm,  
Sunday 8am-6pm.

5 Stenhouse Bay Road, Marion Bay  
Mob: 0421 530 558  
Email: marionbay@elitefuels.com.au



**RETAIL & WHOLESALE AVAILABLE**

- |              |          |                 |
|--------------|----------|-----------------|
| Rock Lobster | Whiting  | Atlantic Salmon |
| Oysters      | Flathead | and more        |
| Scallops     | Prawns   |                 |

**08 8854 5175**

12918 Yorke Highway, Warooka SA  
sales@loweryorkeseafood.com.au  
www.loweryorkeseafood.com.au



**FRESH & FROZEN**



**Point Turton General Store & Bakery**

**"Home of the Witchetty Grub"**

We are a small general store, take away, bakery, post office agent, service station and we cater for the pro and recreational fishermen. Our bakery is well known for its fresh bread and knott rolls, we produce our own pies, pasties and have a range of cakes, pizzas and fresh Indian curries that are made onsite. Open every day 7am-7pm.

72 Bayview Road, Point Turton  
Ph: (08) 8854 5243  
Email: pointturtonservo@gmail.com



**Stansbury Visitor Information Office and Seaside Markets**

The **Stansbury Visitor Information Office** is located in the original town post office built in 1877. The post office served the community until 1984. Now owned and operated by the Stansbury Progress Association, this busy community hub offers information, maps, souvenirs, community services, and a variety of gifts, clothing, local produce and craft.

**Visitor Information Office:**  
Corner Weaver and Towler streets, Stansbury  
**Markets: Anzac Parade, Stansbury**  
Ph: 08 8852 4577 Email: tourism@stansburysa.com.au  
www.stansburysa.com.au

Call in to see our friendly staff and volunteers who will assist in ensuring you experience the best of Southern Yorke Peninsula.  
**The Stansbury Seaside Markets:** • Yorke Peninsula's premier markets established 2003. • Held annually from October through to April. • Foreshore location, overlooking picturesque Oyster Bay. • Huge variety of produce and goods. • For market dates, please visit our website www.stansburysa.com.au or follow us on Facebook.



**SALT**  
Food & Events  
**FISH & CHIPS**

Seafood Pastas, Prawns, Squid Rings, Oysters  
Coffee & cakes/slices  
Family friendly dine in or takeaway

**0493 827 737**

12918 Yorke Highway, Warooka SA  
www.saltfoodandevents.com.au

**VENUE HIRE**

Menu

## GETTING HERE & AROUND



Walleroo Marina Apartments Bike Hire, Wallaroo/Wadla Waru

### By road

BYO vehicle (or hire one in Adelaide) – either way, driving through Yorke Peninsula is a wonderful experience with views of the ocean and stretches of farming land to keep you company. Follow National Highway One from Adelaide to Port Wakefield. At Federation Corner, you can choose to turn south along the coast or continue straight on to reach the Copper Coast in around 30 minutes. Towns and attractions are close to one another, so travel at your own pace and stop to take in the sights, or follow one of our self-drive itineraries in this guide. There are fuel stations in most towns, just remember some close in early evening.

### By coach

Yorke Peninsula Coaches operate regular services from Adelaide Central Bus Station on Franklin Street to various towns throughout

Yorke Peninsula. There are limited bus services or transport options between towns on Yorke Peninsula.

### Cycling

There is no better way to enjoy Yorke Peninsula's diverse landscapes than by bike. The Walk the Yorke leisure trail offers shared cycling/walking trails around the coastline, and the sealed Rail Trail connects the towns of Kadina and Wallaroo following the old railway line. There are shelters and interpretive signs along both the Walk the Yorke and rail trails. There are several bike hire options on the peninsula: there's e-bike hire at Copper Trails Bike Hire in Kadina; several caravan parks also offer bike hire to their guests.

### Spencer Gulf Searoad

Take a break and take a ferry! Spencer Gulf Searoad travels daily between Wallaroo and

Lucky Bay on Eyre Peninsula. Café facilities can be found on board *Aurora V* and at the Lucky Bay terminal. The ferry can take you and your vehicle or just you; bookings can be made online. Either way you can sit back, relax and admire the gulf views.

### Mapping it out – The Coastal Way

Yorke Peninsula has a spectacular and interesting history waiting to be explored. Download a Coastal Way map from [yorkepeninsula.com.au](http://yorkepeninsula.com.au) or collect one from Visitor Information providers around South Australia and follow the Coastal Way road trip signs to discover Yorke Peninsula's key experiences. The road trip starts from Port Wakefield down to Ardrossan through Stansbury to Dhillba Guuranda-Innes National Park, then north to Moonta, Kadina and Wallaroo finishing at Port Broughton. Allow at least four to five days to really experience everything Yorke Peninsula has to offer.

Scan the QR code for more information.



Scan the QR code for more information on Walk the Yorke maps, itineraries and other individual trails. Topographic maps of Walk the Yorke can be purchased online.



SPENCER GULF  
Searoad

TAKE A BREAK. TRAVEL BY FERRY.



BOOKINGS ESSENTIAL  
08 8823 0777  
[spencergulfsearoad.com](http://spencergulfsearoad.com)



# USEFUL INFORMATION

## VISITOR INFORMATION

**Ardrossan Visitor Information Centre**  
Fifth Street, Ardrossan  
Phone: (08) 8837 4195  
Open daily

**Copper Coast Visitor Information Centre**  
50 Mines Road, Kadina  
Phone: (08) 8821 2333 or 1800 654 991  
Open daily

**Moonta Visitor Information Centre**  
Blanche Terrace, Moonta  
Phone: (08) 8825 1891

**Coobowie**  
Beach Road, Coobowie  
Phone: (08) 8852 8350

**Maitland**  
Robert Street, Maitland  
Phone: (08) 8832 2174

**Minlaton**  
Main Street, Minlaton  
Phone: (08) 8853 2600

**Port Broughton**  
McKay Street, Port Broughton  
Phone: 0498 085 012

**Port Vincent**  
Marine Parade, Port Vincent  
Phone: (08) 8853 7283

**Stansbury**  
Weaver Street, Stansbury  
Phone: (08) 8852 4577

**Walleroo**  
Jetty Road, Wallaroo  
Phone: (08) 8823 3015

**Yorke town**  
Stansbury Road, Yorketown  
Phone: (08) 8852 1820

## Emergency broadcasting

ABC broadcasts official warnings from emergency agencies at regular intervals on ABC Radio, ABC News 24 and via Twitter @abcemergency. For local ABC Radio frequencies, phone 13 99 94 or go to [abc.net.au/emergency](http://abc.net.au/emergency). ABC Adelaide is broadcast on 891AM, digital radio [abc.net.au/radio](http://abc.net.au/radio) and is also available via the ABC Radio Mobile app.

## Fire danger

During Fire Danger Season, generally from November to April, there are strict conditions for lighting any fires, including campfires. On Total Fire Ban days, all fires are banned. Avoid severe penalties by checking [cfs.sa.gov.au](http://cfs.sa.gov.au) before lighting any fires.

Visit [cfs.sa.gov.au](http://cfs.sa.gov.au) and subscribe to bushfire warnings and other important information and check the CFS Facebook page to stay informed. Monitor the daily weather forecast and Fire Danger Ratings, know your Bushfire Safer Place, and listen for warning messages and updates on your local AM radio station. Further bushfire safety information is available by contacting the Bushfire Information Hotline on 1800 362 361 (TTY 13 36 77) or visiting [cfs.sa.gov.au](http://cfs.sa.gov.au)

## Enjoy South Australia's regions – but don't bring a pest with you

Welcome to South Australia, where you can savour our quality wine, food and other delights.

We take zero chances when it comes to fruit fly. To protect our delicious produce, fines apply for bringing restricted fruit and fruiting vegetables across the border.

If you're planning a trip to the Riverland, buy local and support our growers. Do not bring any fresh fruit or fruiting vegetables into the region unless you have an itemised receipt from a South Australian retail outlet showing it was purchased from outside a current fruit fly outbreak or suspension area.

To find out more visit [pir.sa.gov.au/fruitfly](http://pir.sa.gov.au/fruitfly)



## STAYING SAFE

Phone 13 14 44 for police assistance or phone 000 for all emergencies. See the town facilities directory on page 60 of this guide for the locations of local police stations.

Scan the QR code for public holidays and school terms.



The 2024 Yorke Peninsula Visitor Guide is proudly produced by HWR Media in partnership with Yorke Peninsula Tourism.

All information contained in the publication is correct at the time of printing November, 2024. For updated information, go to [yorkepeninsula.com.au](http://yorkepeninsula.com.au)

All advertisements are accepted on the basis that their contents are true and accurate and that they are in no way misleading or otherwise contrary to the Competition and Consumer Act 2010, or the Fair Trade Act (SA) 1987. Yorke Peninsula Tourism and HWR Media do not accept any liability to any person claiming they have been misled or deceived by any material produced herein. Copyright Yorke Peninsula Tourism 2024.

Images © South Australian Tourism Commission (page 2–3, 4, 5, 6, 9, 10, 17, 19, 29), Barunga West Council (page 13), Benjamin Goode (page 42–43, 47), Callum Jackson (page 6), Che Chorley (page 29), Harry Vick (page 20, 21, 44), Hillocks Drive (page 29), James Elvy @jameselvy (page 14–15), Mish and Kirk (page 29), Peter Fisher (page 4, 10, 17, 49), Riley M Williams (page 29), Samuel Price (page 58), takeus\_withyou (page 28), Tourism Australia (page 4–5, 30), Yorke Peninsula Tourism (cover, page 8–9, 11, 12, 18, 25, 27, 56–57).

Published by HWR Media  
Phone: (08) 8379 9522  
Email: [hwr@hwrmedia.com.au](mailto:hwr@hwrmedia.com.au)  
[hwrmedia.com.au](http://hwrmedia.com.au)



# ADVERTISER INDEX

## Accommodation

Bush Camping.....	<a href="http://yorke.sa.gov.au/bush-camping-permit">yorke.sa.gov.au/bush-camping-permit</a>	30
Country Getaways Holiday Rentals.....	<a href="http://countrygetaways.com.au">countrygetaways.com.au</a>	31
<b>Ardrossan</b>		
Ardrossan Caravan Park.....	08 8837 3262	31
<b>Black Point</b>		
Black Point Caravan Park.....	08 8838 2239	36
Coastal Horizons.....	<a href="http://blackpointcoastalhorizons.com.au">blackpointcoastalhorizons.com.au</a>	34
<b>Bute</b>		
Bute Caravan Park.....	<a href="http://barungawest.sa.gov.au">barungawest.sa.gov.au</a>	48
<b>Coobowie</b>		
Coobowie Caravan Park.....	08 8852 8132	34
<b>Edithburgh</b>		
Edithburgh Caravan Park.....	08 8852 6056	32
Edithburgh Seaside Motel.....	08 8852 6172	35
<b>Marion Bay</b>		
Hillocks Drive – Butler's Beach.....	<a href="http://hillocksdrive.com">hillocksdrive.com</a>	54
Marion Bay Caravan Park.....	<a href="http://marionbaycp.com.au">marionbaycp.com.au</a>	36
Seafire Beach House.....	<a href="http://seafire.com.au">seafire.com.au</a>	33
Yondah Beach House.....	<a href="http://yondah.com.au">yondah.com.au</a>	33
<b>Minlaton</b>		
Minlaton Caravan Park.....	<a href="http://minlatoncaravanpark.com.au">minlatoncaravanpark.com.au</a>	32
<b>Pine Point</b>		
Pine Point Caravan Park.....	<a href="http://pinepointcpk.com.au">pinepointcpk.com.au</a>	35
<b>Point Turton</b>		
Point Turton Caravan Park.....	<a href="http://pointturtoncp.com.au">pointturtoncp.com.au</a>	37
<b>Port Broughton</b>		
Port Broughton Tourist Park.....	<a href="http://portbroughtontouristpark.com.au">portbroughtontouristpark.com.au</a>	34
<b>Port Hughes</b>		
BIG4 Port Hughes Holiday Park.....	<a href="http://big4porthughes.com.au">big4porthughes.com.au</a>	32
<b>Port Rickaby</b>		
Port Rickaby Caravan Park.....	<a href="http://portrickabycp.com.au">portrickabycp.com.au</a>	36
<b>Port Vincent</b>		
Karen's Cabins and Apartments.....	0407 795 733	35
Port Vincent Caravan Park & Seaside Cabins.....	<a href="http://portvincentcaravanpark.com.au">portvincentcaravanpark.com.au</a>	33
Port Vincent Foreshore Caravan Park.....	<a href="http://portvincentfcp.com.au">portvincentfcp.com.au</a>	37
Port Vincent Motel and Apartments.....	<a href="http://portvincentcabins.com.au">portvincentcabins.com.au</a>	34
<b>Stansbury</b>		
Stansbury Foreshore Caravan Park.....	08 8852 4171	33
Stansbury Holiday Motel.....	08 8852 4455	34
<b>Walleroo</b>		
Bev's Retreat.....	0438 520 670	34
Walleroo Holiday Park.....	<a href="http://wallerooholidaypark.com.au">wallerooholidaypark.com.au</a>	35
<b>Yorke town</b>		
Accommodation on Yorke.....	<a href="http://accommodationonyorke.com.au">accommodationonyorke.com.au</a>	34
Yorke town Caravan Park.....	<a href="http://yorke towncp.com.au">yorke towncp.com.au</a>	37

## Attractions and experiences

<b>Ardrossan</b>		
Ardrossan Museum & Information Centre.....	<a href="http://ardrossan.sa.au">ardrossan.sa.au</a>	51
<b>Kadina</b>		
Copper Coast Indoor Play Centre.....	<a href="http://visitcoppercoast.com.au">visitcoppercoast.com.au</a>	48
Copper Coast Putt Putt.....	<a href="http://visitcoppercoast.com.au">visitcoppercoast.com.au</a>	13
Farm Shed Museum.....	<a href="http://visitcoppercoast.com.au">visitcoppercoast.com.au</a>	27
<b>Moonta</b>		
Copper Coast Splash Town Water Park.....	<a href="http://visitcoppercoast.com.au">visitcoppercoast.com.au</a>	13
Copper Trails Bike Hire.....	0447 764 777	13
<b>Walleroo</b>		
Walleroo Heritage & Nautical Museum.....	08 8823 3015	48
Walleroo Silo Light Show.....	<a href="http://visitcoppercoast.com.au">visitcoppercoast.com.au</a>	26

## Events

<b>Copper Coast</b>		
Copper Coast Flame Festival.....	<a href="http://visitcoppercoast.com.au">visitcoppercoast.com.au</a>	38
<b>Kadina</b>		
Kernewek Lowender Copper Coast Cornish Festival.....	<a href="http://kernewek.org">kernewek.org</a>	39
<b>Price</b>		
Price Tractor Pull.....	<a href="http://pricetractorpull.com.au">pricetractorpull.com.au</a>	26
<b>Stansbury</b>		
Stansbury Visitor Information Centre & Seaside Markets....	08 8852 4577	55

## Food, wine and beverages

<b>Ardrossan</b>		
Ardrossan Hotel Motel.....	<a href="http://ardrossanhotelmotel.com.au">ardrossanhotelmotel.com.au</a>	24
<b>Arthurton</b>		
Sunny Hill Distillery.....	<a href="http://sunnyhilldistillery.com.au">sunnyhilldistillery.com.au</a>	24
<b>Maitland</b>		
Barley Stacks Wines.....	<a href="http://barleystackswines.com">barleystackswines.com</a>	23
Maitland Bakery and Café.....	08 8832 2233	51
<b>Minlaton</b>		
Minlaton Hotel Motel.....	<a href="http://minlatonhotel.com.au">minlatonhotel.com.au</a>	24
Watsacowie Brewing Company.....	<a href="http://watsacowie.com.au">watsacowie.com.au</a>	24
<b>Moonta</b>		
Taste the Yorke.....	<a href="http://tastetheyorke.com.au">tastetheyorke.com.au</a>	47
<b>Point Turton</b>		
Tavern on Turton.....	08 8854 5063	22
<b>Port Broughton</b>		
Gloria's Coffee Shop.....	<a href="http://barungavillage.com.au/glorias-coffee-shop">barungavillage.com.au/glorias-coffee-shop</a>	46
<b>Port Wakefield</b>		
Rising Sun Hotel.....	08 8867 1023	46
<b>Walleroo</b>		
Bond Store Wallaroo.....	<a href="http://bondstore.net.au">bondstore.net.au</a>	23
<b>Warooka</b>		
Lower Yorke Seafood.....	<a href="http://loweryorkeseafood.com.au">loweryorkeseafood.com.au</a>	55
Salt Food & Events.....	<a href="http://saltfoodandevents.com.au">saltfoodandevents.com.au</a>	55

## General services

<b>Edithburgh</b>		
Edithburgh Post Office & Gift Shop.....	08 8852 6295	54
<b>Marion Bay</b>		
Marion Bay General Store.....	0421 530 558	54
<b>Point Turton</b>		
Point Turton Bakery & General Store.....	08 8854 5243	55
<b>Port Broughton</b>		
Barunga Village.....	<a href="http://barungavillage.com.au">barungavillage.com.au</a>	46

## Information and bookings

Copper Coast Visitor Information Centre.....	<a href="http://visitcoppercoast.com.au">visitcoppercoast.com.au</a>	IFC
Visitor Information Centres.....	<a href="http://southaustralia.com">southaustralia.com</a>	IBC
Yorke Peninsula Visitor Information.....	1800 202 445	OBC
<b>Moonta</b>		
Moonta Mines National Heritage Place.....	<a href="http://moontaheritage.com.au">moontaheritage.com.au</a>	48
<b>Stansbury</b>		
Stansbury Visitor Information Centre and Seaside Markets.....	08 8852 4577	55

## Tours and transport

Aboriginal Cultural Tours SA.....	<a href="http://aboriginalculturaltourssa.com.au">aboriginalculturaltourssa.com.au</a>	26
<b>Walleroo</b>		
Spencer Gulf Searoad.....	08 8823 0777	57



# Planning a visit to Yorke Peninsula?

Talk to one of our friendly locals today.

Berry Bay

**ARDROSSAN**

08 8837 4195

**EDITHBURGH**

08 8852 6295

**NATIONAL PARKS**

08 8854 3200

**STANSBURY**

08 8852 4577

**COOBOWIE**

08 8852 6295

**MAITLAND**

08 8832 2174

**PORT VICTORIA**

08 8834 2098

**WAROOKA**

08 7127 2252

**CORNY POINT**

08 8855 3368

**MINLATON**

08 8853 2600

**PORT VINCENT**

08 8853 7283

**YORKETOWN**

08 8852 1820

